



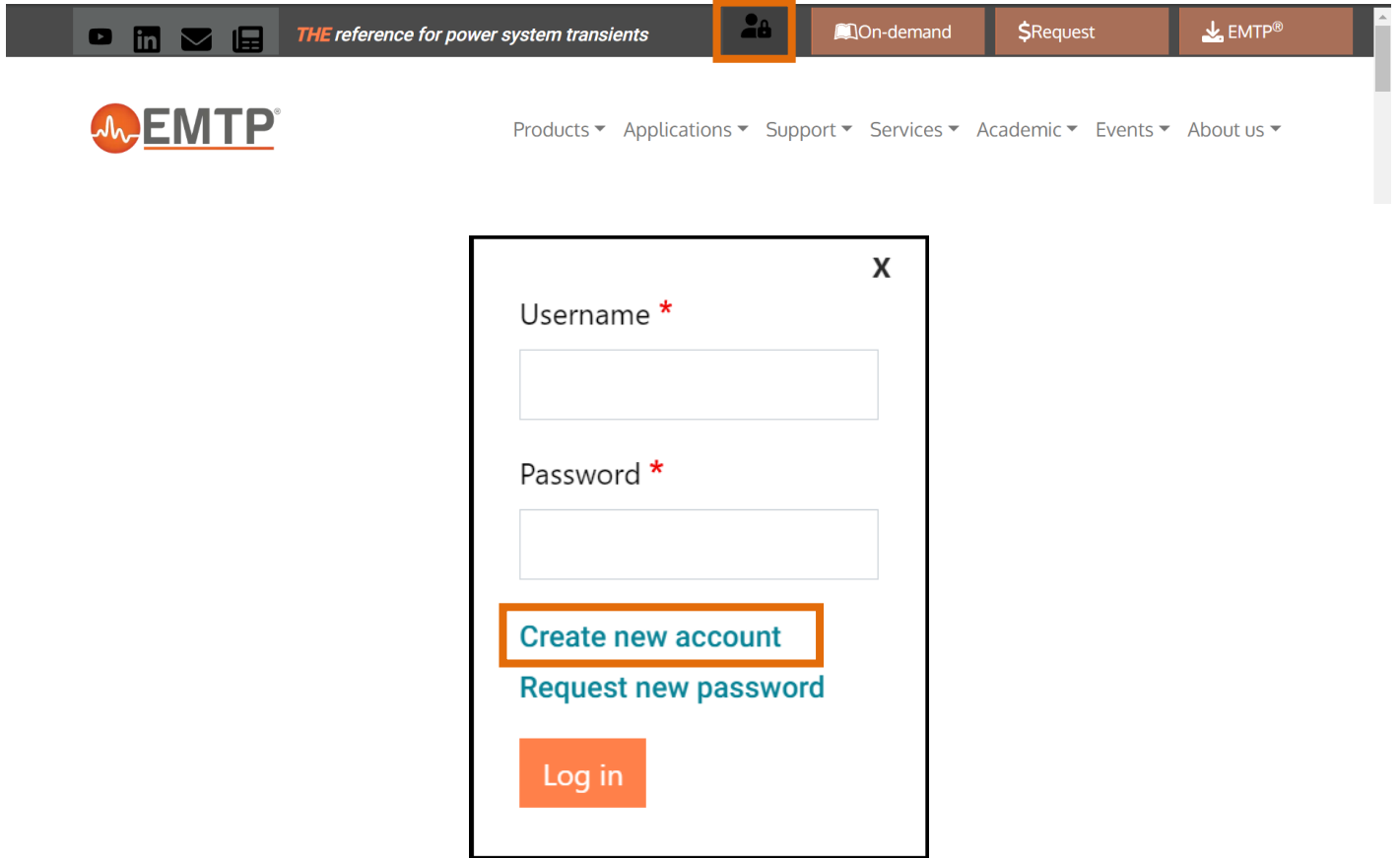
EMTP® – Installation Manual

Content

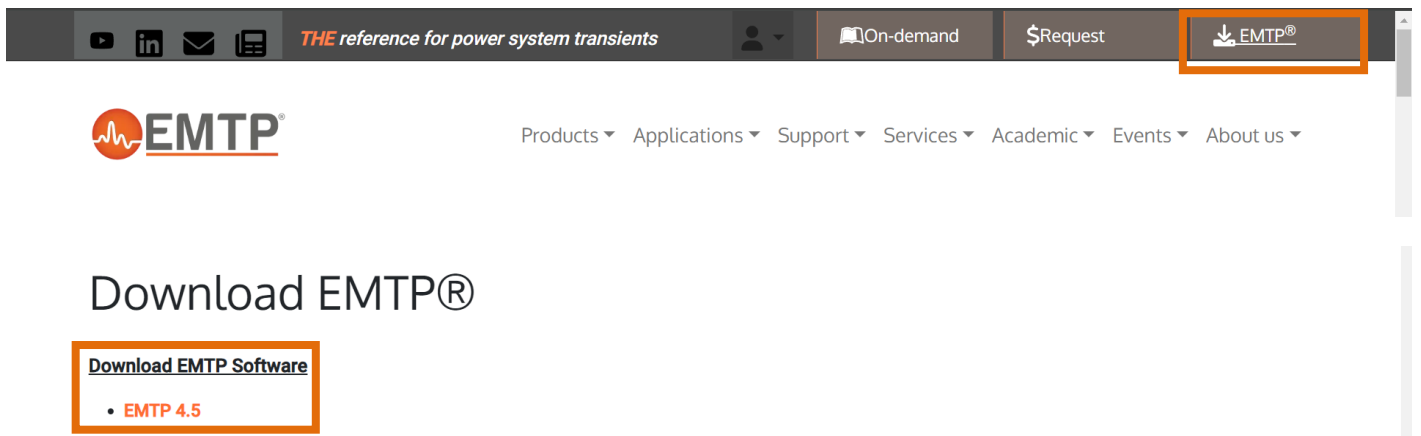
Download2
Installation3
MATLAB Runtime 10

Download

1. Visit the [EMTP website](#) and log in with your username and password. If you do not have an account, use the "**Create new account**" option to create one.

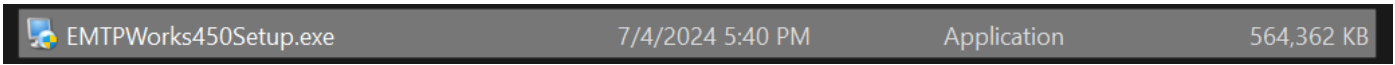


2. Once logged in, go to the [downloads section](#) and click on **EMTP X.X.X** (X.X.X being the version number) to start downloading this version.



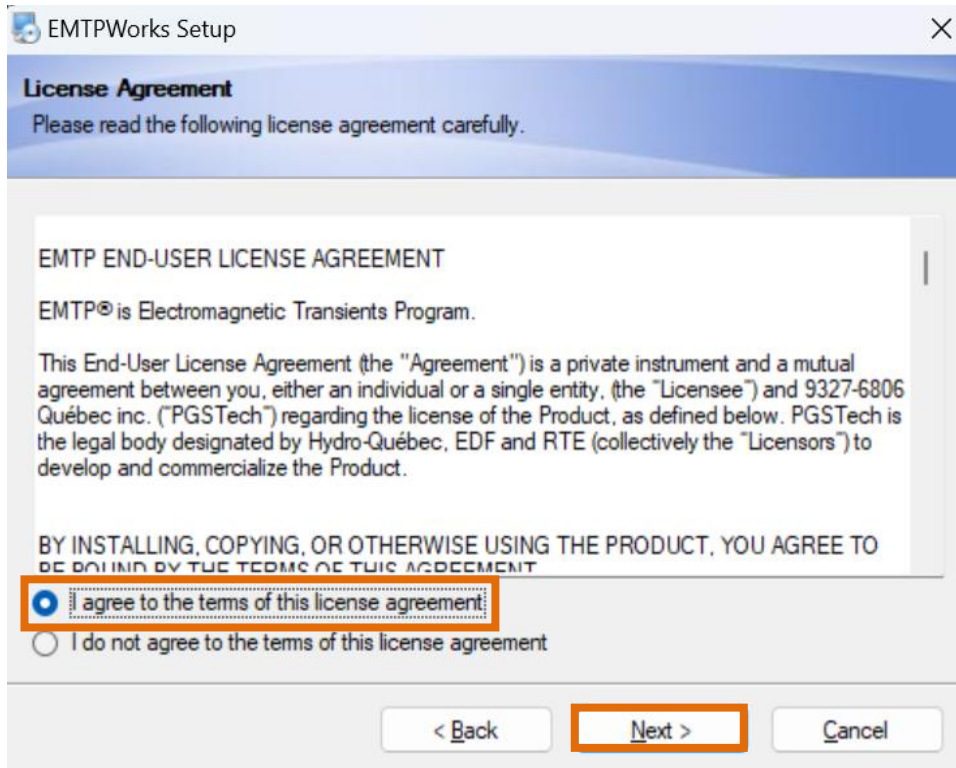
Installation

1. Execute the previously downloaded EMTP installer.

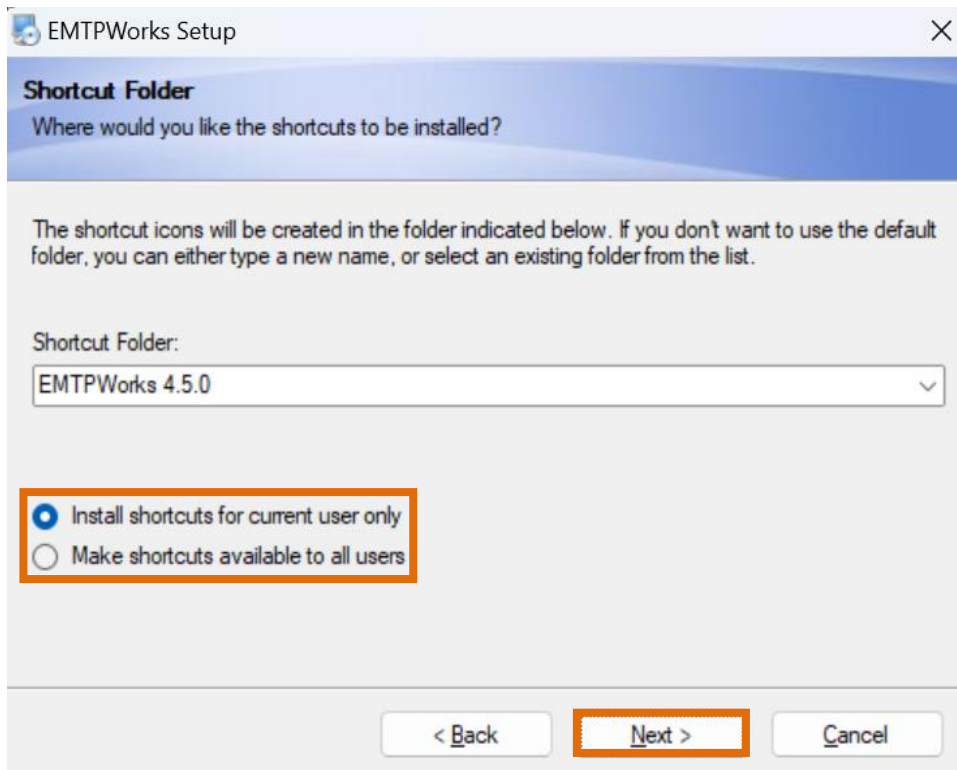
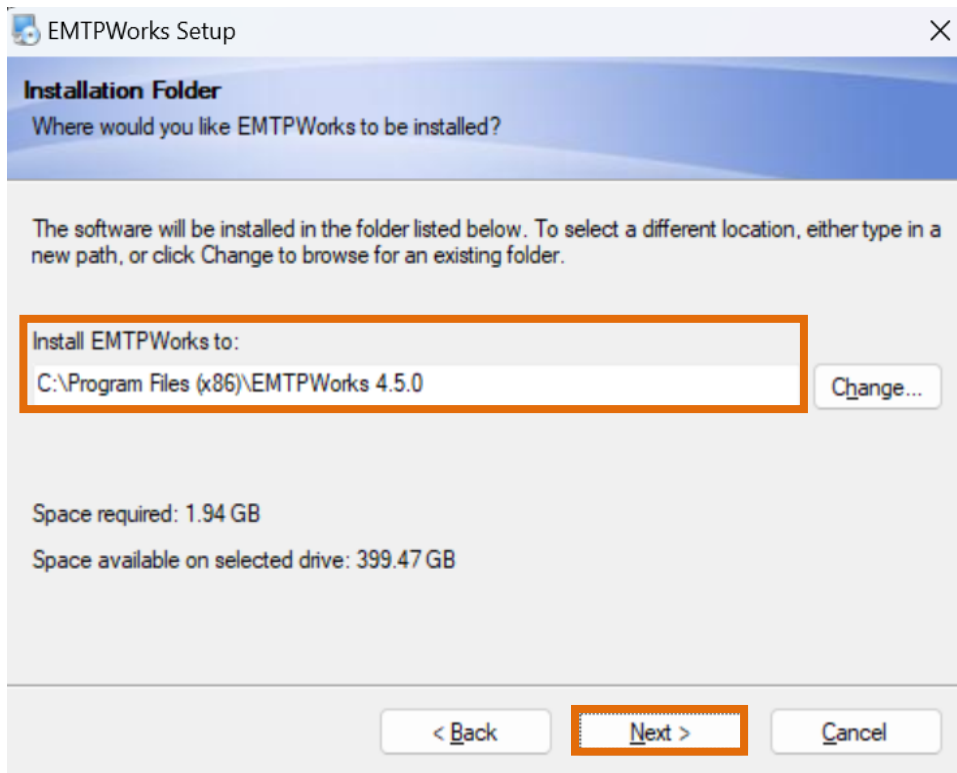


2. Follow the instructions of the installer assistant and check the option to agree the license agreement.

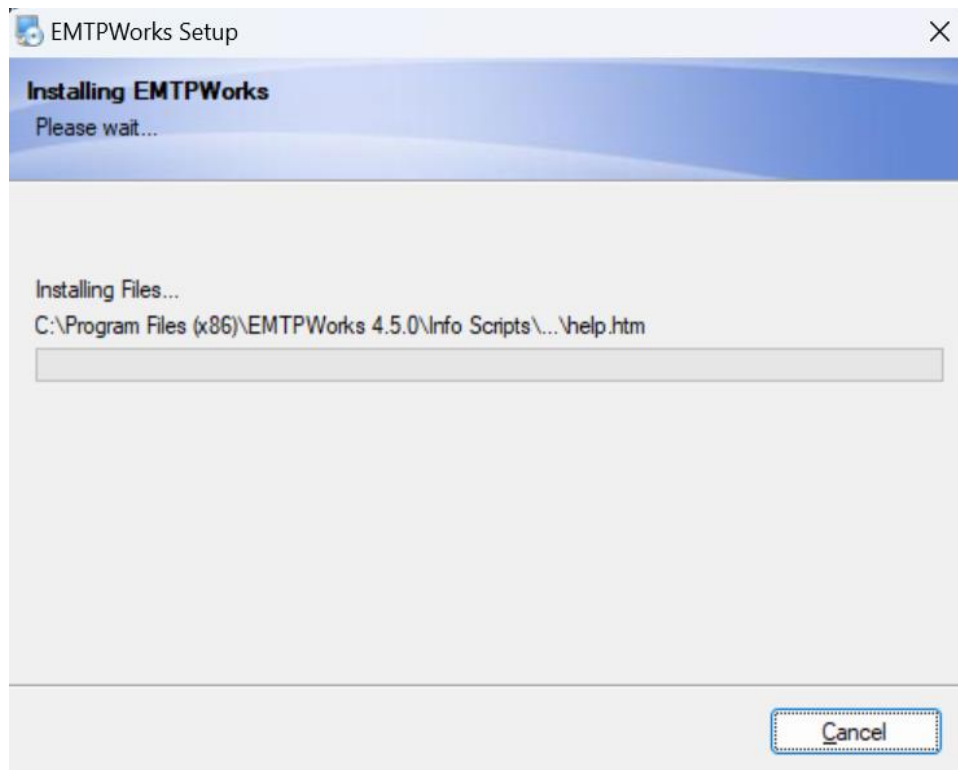
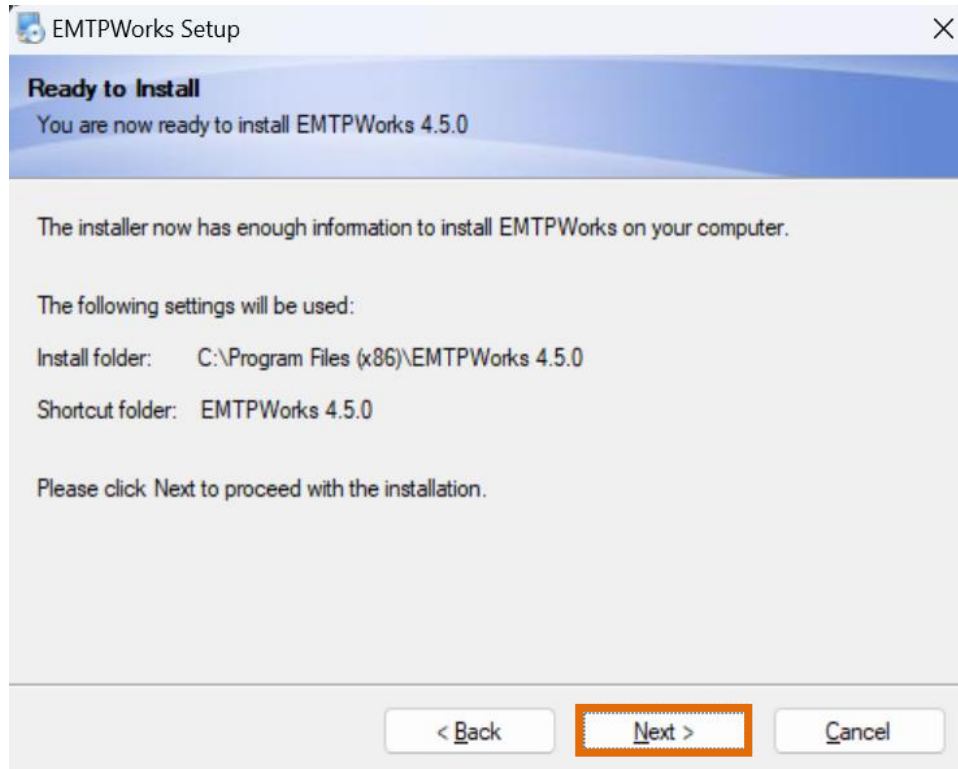




3. Select the folder for the EMTP software installation. By default, it will be on Program Files (x86). If you have previous versions, use a new folder for the EMTP X.X.X version. Also, check the computer users that will have access to the EMTP.



4. At this point, you are ready to install EMTP. Click "**Next**" and wait a few minutes for the installation to complete.

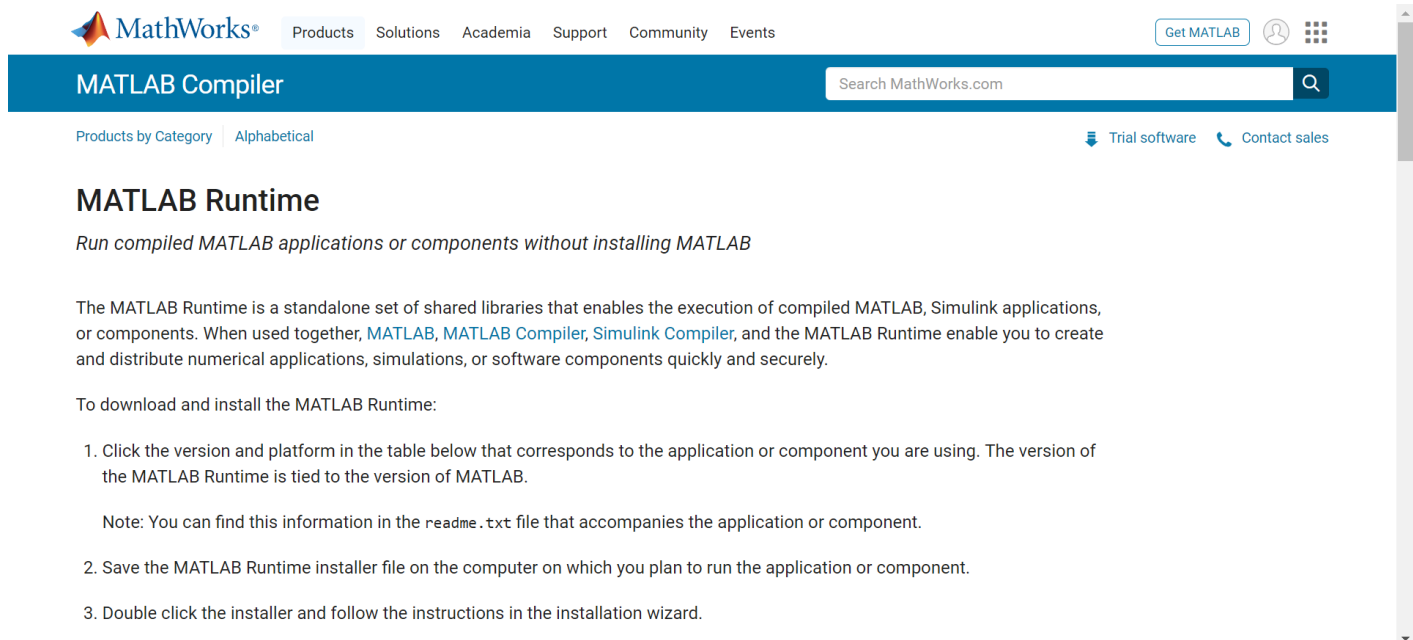




5. During the installation, a message will appear indicating that the **MATLAB Runtime** needs to be included. Select "**OK**" to be directed to the webpage where this module can be downloaded. Please refer to
MATLAB Runtime

MATLAB Runtime

1. EMTP requires the MATLAB Runtime to use some components. Please download the **R2017b** version for Windows from the [MATLAB Compiler website](#).



MATLAB Runtime

Run compiled MATLAB applications or components without installing MATLAB

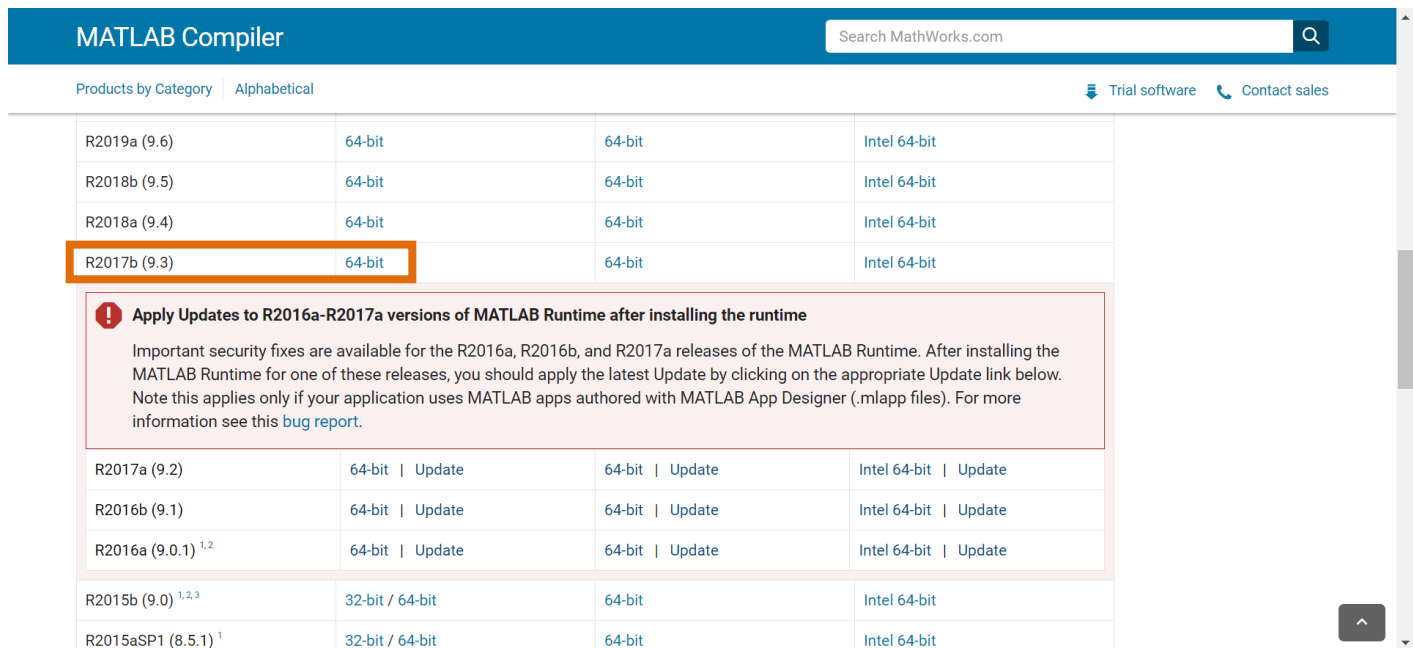
The MATLAB Runtime is a standalone set of shared libraries that enables the execution of compiled MATLAB, Simulink applications, or components. When used together, [MATLAB](#), [MATLAB Compiler](#), [Simulink Compiler](#), and the MATLAB Runtime enable you to create and distribute numerical applications, simulations, or software components quickly and securely.

To download and install the MATLAB Runtime:

1. Click the version and platform in the table below that corresponds to the application or component you are using. The version of the MATLAB Runtime is tied to the version of MATLAB.

Note: You can find this information in the `readme.txt` file that accompanies the application or component.

2. Save the MATLAB Runtime installer file on the computer on which you plan to run the application or component.
3. Double click the installer and follow the instructions in the installation wizard.



R2019a (9.6)	64-bit	64-bit	Intel 64-bit
R2018b (9.5)	64-bit	64-bit	Intel 64-bit
R2018a (9.4)	64-bit	64-bit	Intel 64-bit
R2017b (9.3)	64-bit	64-bit	Intel 64-bit


⚠ Apply Updates to R2016a-R2017a versions of MATLAB Runtime after installing the runtime

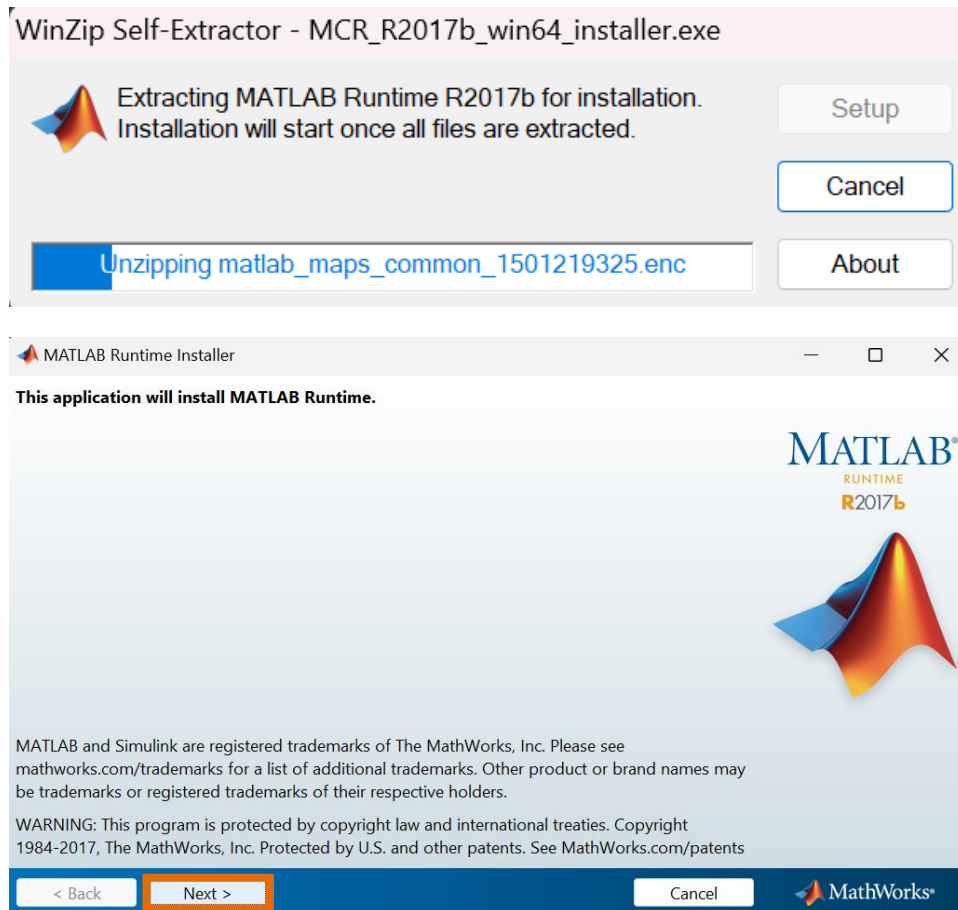
Important security fixes are available for the R2016a, R2016b, and R2017a releases of the MATLAB Runtime. After installing the MATLAB Runtime for one of these releases, you should apply the latest Update by clicking on the appropriate Update link below. Note this applies only if your application uses MATLAB apps authored with MATLAB App Designer (.mlapp files). For more information see this [bug report](#).

R2017a (9.2)	64-bit Update	64-bit Update	Intel 64-bit Update
R2016b (9.1)	64-bit Update	64-bit Update	Intel 64-bit Update
R2016a (9.0.1) ^{1,2}	64-bit Update	64-bit Update	Intel 64-bit Update

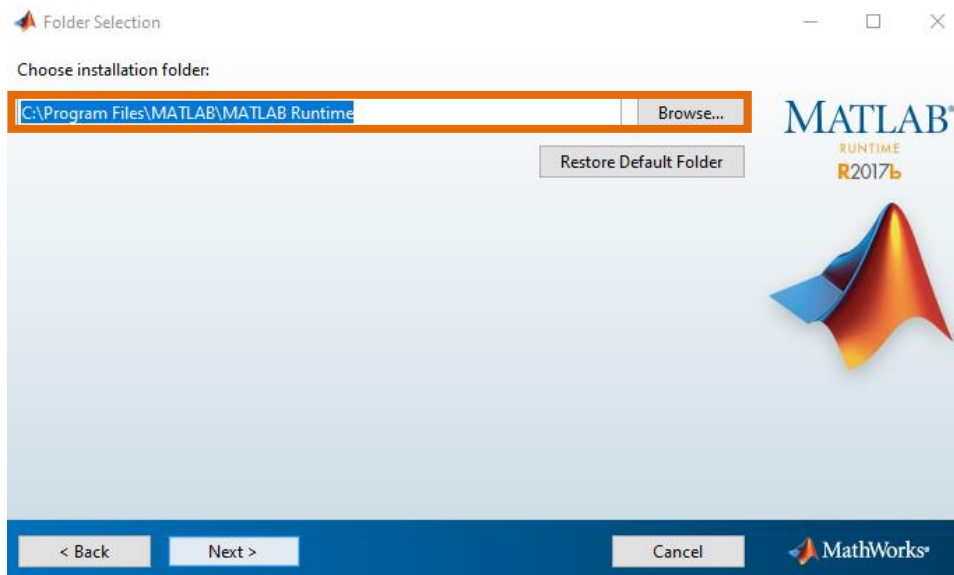
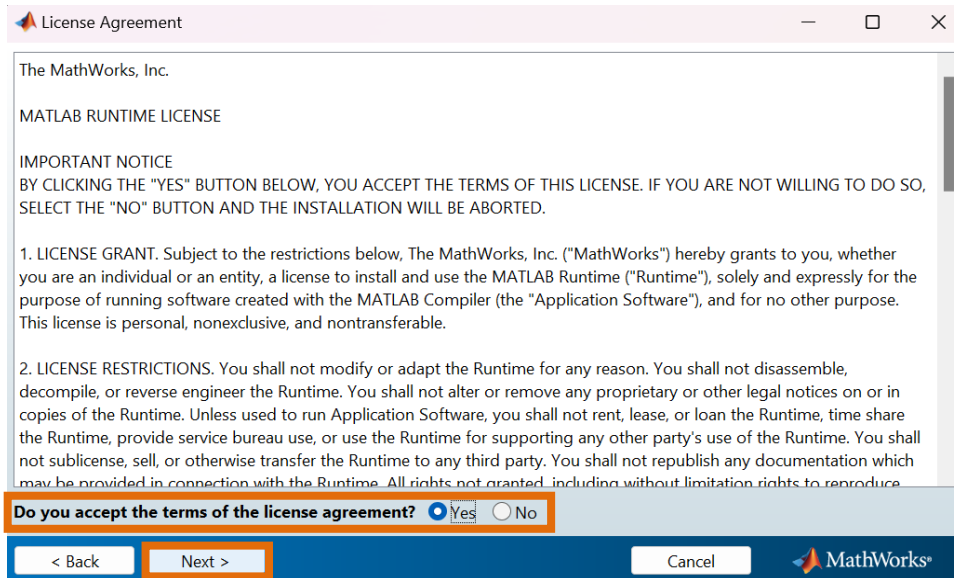
R2015b (9.0) ^{1,2,3}	32-bit / 64-bit	64-bit	Intel 64-bit
R2015aSP1 (8.5.1) ¹	32-bit / 64-bit	64-bit	Intel 64-bit

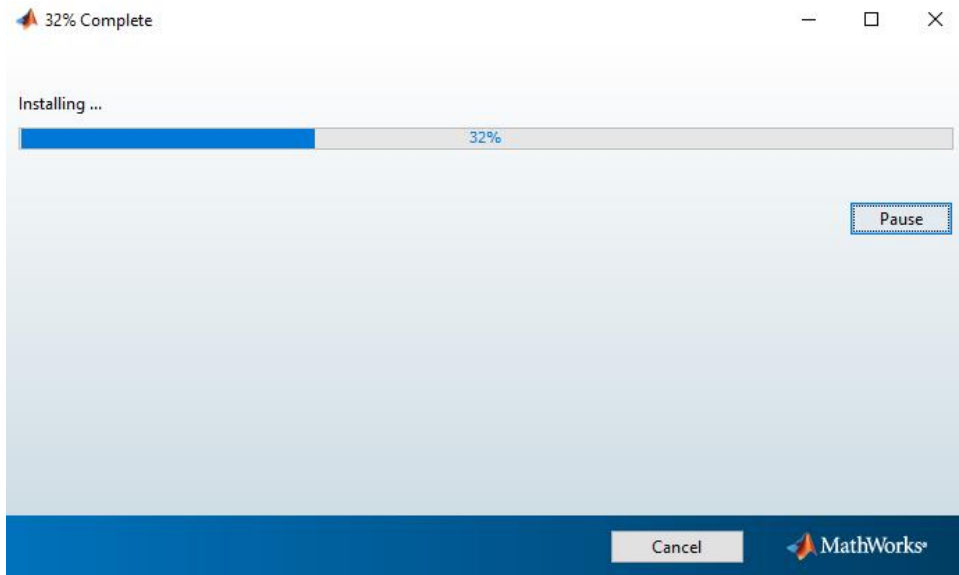
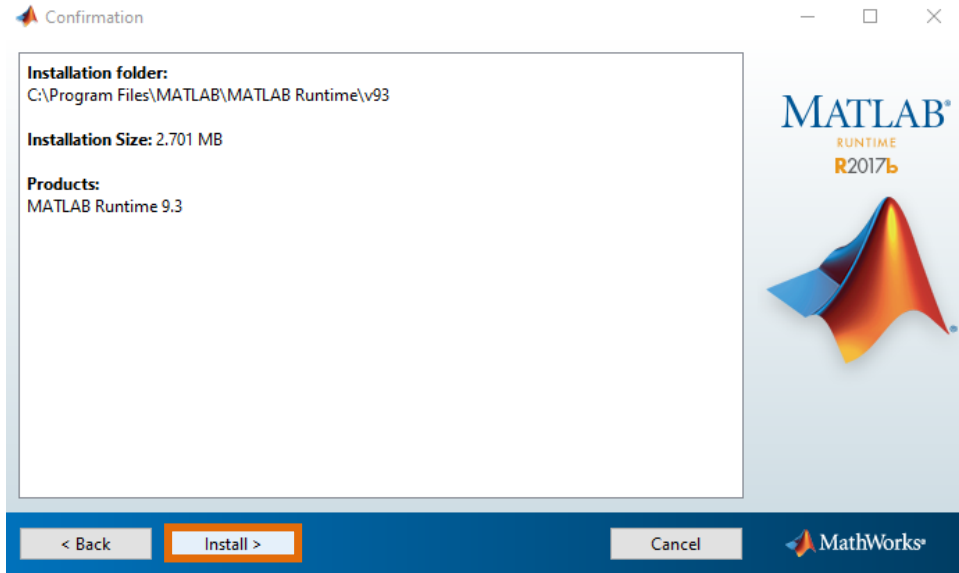
2. Execute the MATLAB runtime installer and wait a few seconds.

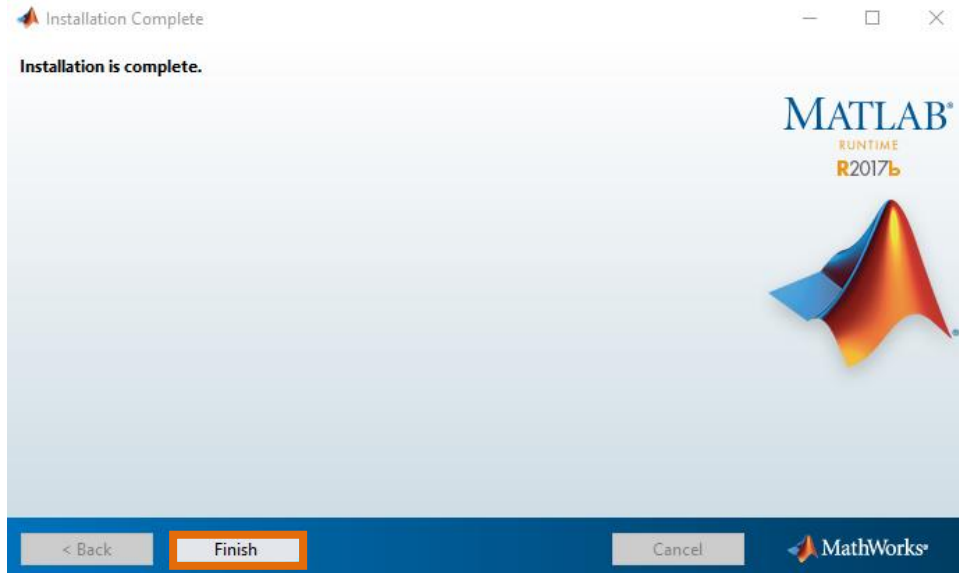
 MCR_R2017b_win64_installer.exe	7/1/2024 10:46 PM	Application	1,363,275 KB
--	-------------------	-------------	--------------



3. Check the license agreement box and continue MATLAB runtime installation. Also, select the desired folder for this installation, we recommend keeping the default folder in Program Files.







Do not hesitate to get in touch with our technical support if you require some assistance:

EMTP[®] Technical support
support@emtp.com