



EMTP® – Offline Activation and Release

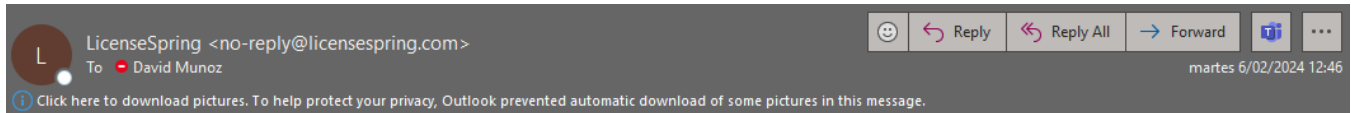
Contents

License Key2
Activation Offline4
Release Offline13

License Key

1. The license manager will receive an email from **LicenseSpring** containing the credentials required to get the **License Key** and access the webpage for license management. Once you have this information, click on the [user portal](#) to be automatically redirected to the login page.

If you cannot find the email in your inbox, please check your spam folder.



You have been assigned as an EMTP License Manager to an order.

An EMTP license manager account has been created. From there, you may visualize your license key(s) which are needed to activate EMTP, and your license(s) usage. To access, click on the User portal link provided in the next section. Login information is included in the same section. To download EMTP, please do to: <https://www.emtp.com/download-emtp> An account to EMTP.com is required.

USER PORTAL CREDENTIALS

<https://users.licensespring.com>
User portal

EMTP
Company code
[david.munoz@](#) *****
Email

Initial password
https://users.licensespring.com/set-password/?key=2ndyfdv7dkgmh82tbbgx3lbrxir12ph5e3oq17hp2de0o0terfwuqzdlfxa318ix&is_initial_password=true
Set password URL

2. Once in the user portal, use the credentials received by email to log in. The **Company Code** is always **EMTP**.



Company ID

Email

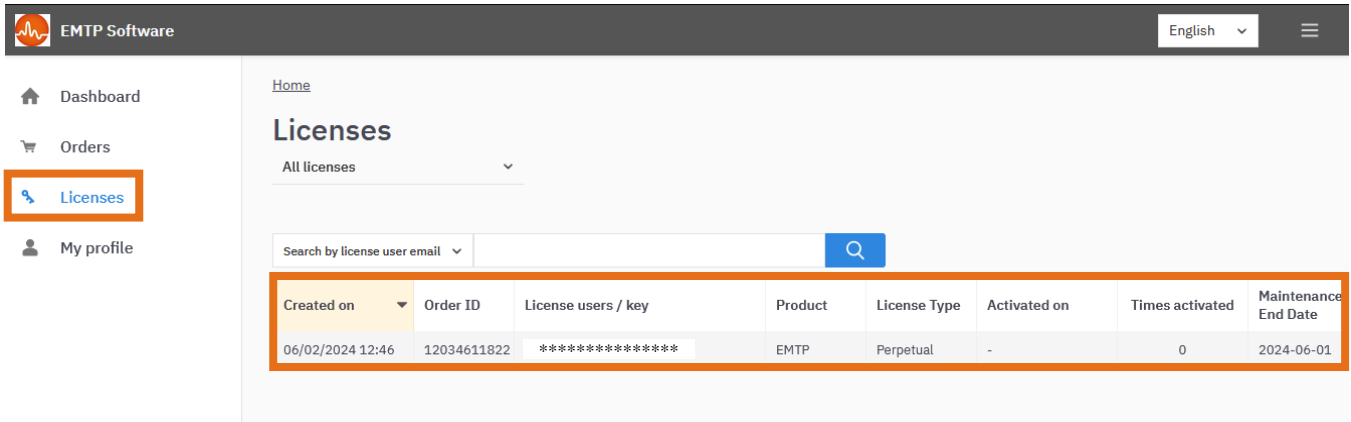
Password

Login

[Forgot your password?](#)

If you are having trouble logging in to your account, please [contact support](#)

- Once logged in, navigate to the "**Licenses**" option on the left side of the website. In the main panel, you will see all your licenses. Select the desired license for activating EMTP and take note of the **License Key** that appears at the top.



EMTP Software English

- Dashboard
- Orders
- Licenses**
- My profile

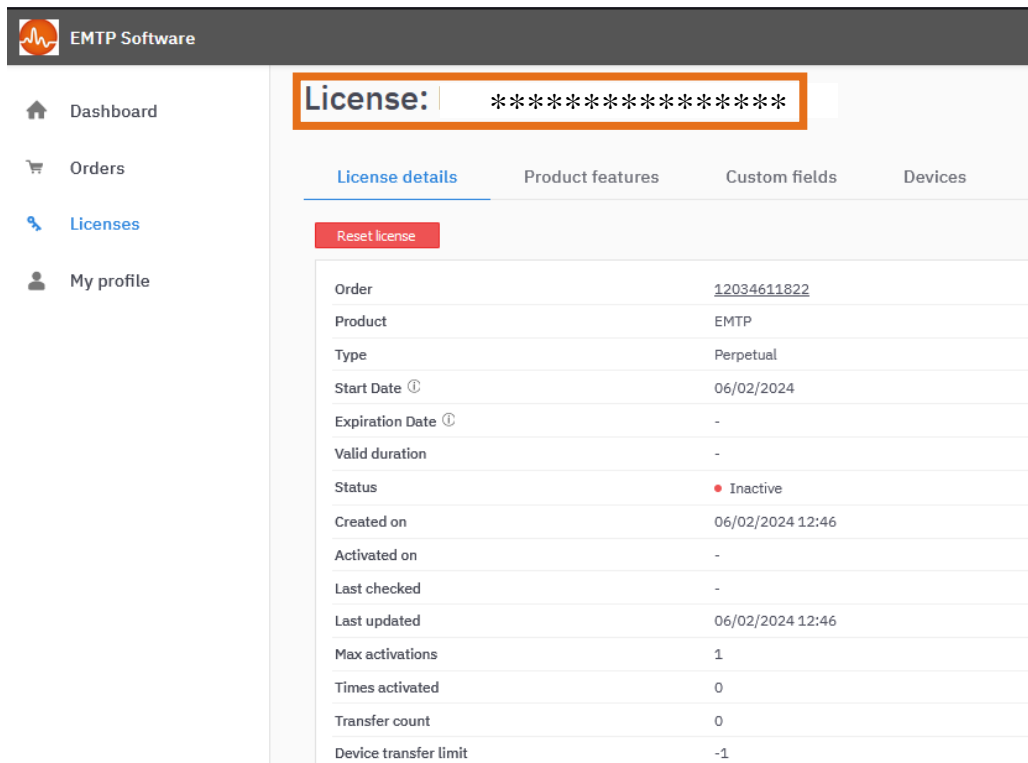
Home

Licenses

All licenses

Search by license user email

Created on	Order ID	License users / key	Product	License Type	Activated on	Times activated	Maintenance End Date
06/02/2024 12:46	12034611822	*****	EMTP	Perpetual	-	0	2024-06-01



EMTP Software

- Dashboard
- Orders
- Licenses**
- My profile

License: *****

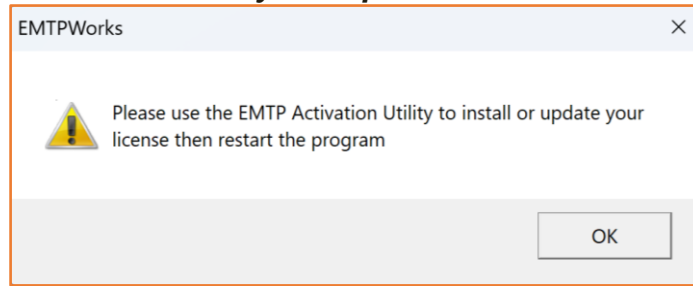
License details | Product features | Custom fields | Devices

Order	12034611822
Product	EMTP
Type	Perpetual
Start Date ⓘ	06/02/2024
Expiration Date ⓘ	-
Valid duration	-
Status	● Inactive
Created on	06/02/2024 12:46
Activated on	-
Last checked	-
Last updated	06/02/2024 12:46
Max activations	1
Times activated	0
Transfer count	0
Device transfer limit	-1

Activation Offline

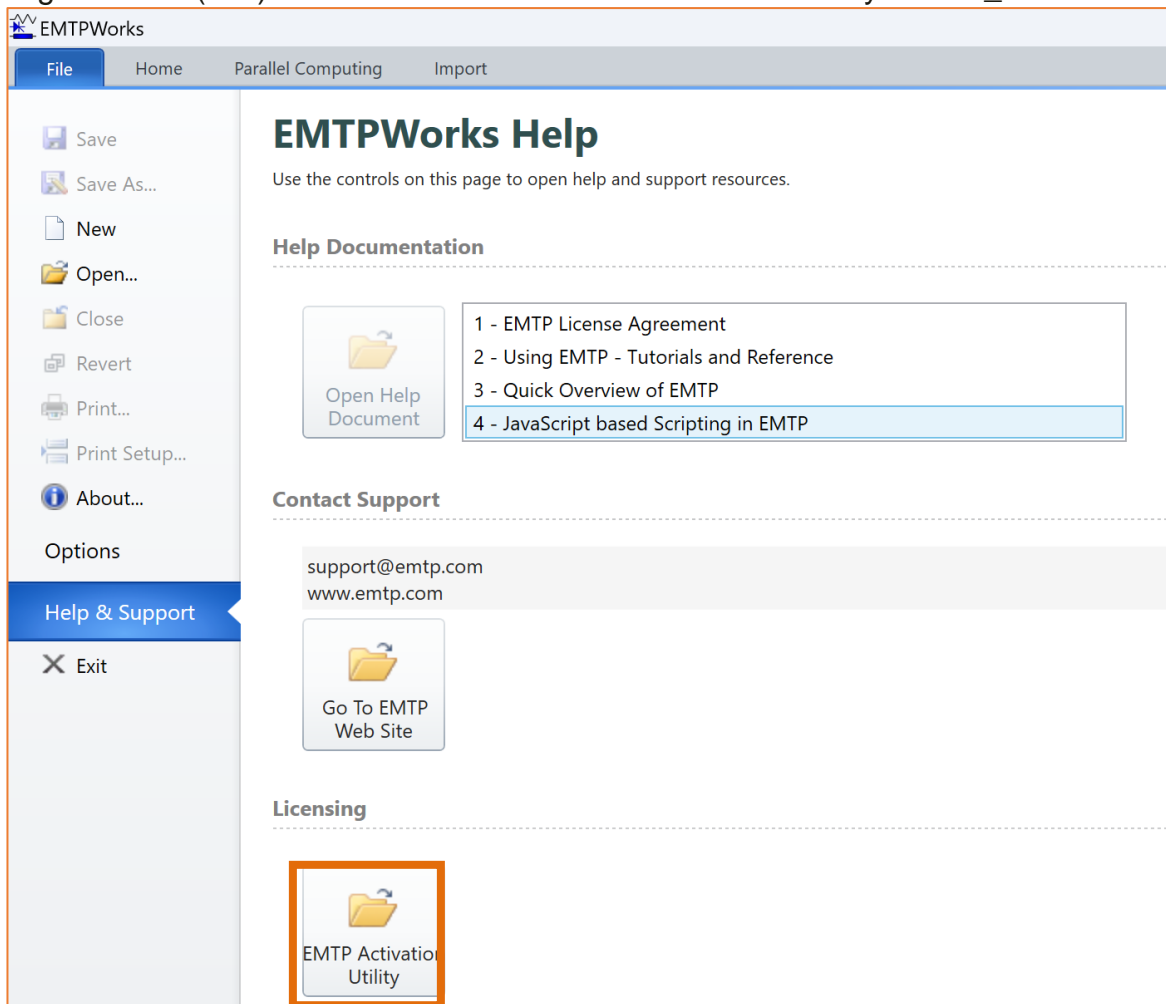
For activation, EMTP must be installed, and the user must have a valid License Key or valid User License credentials (Email & Password). See Installation Guide if it is not the case (<https://emtp.com/documents/EMTP-Documentation/EMTP-installation-manual.pdf>).

1. After EMTP is installed, go to the menu **“Start”** on your computer **All programs/EMTPWorks X.X.X**, and click in the program **EMTPWorks**. If no valid license is activated the **EMTP Activation Utility will open**.

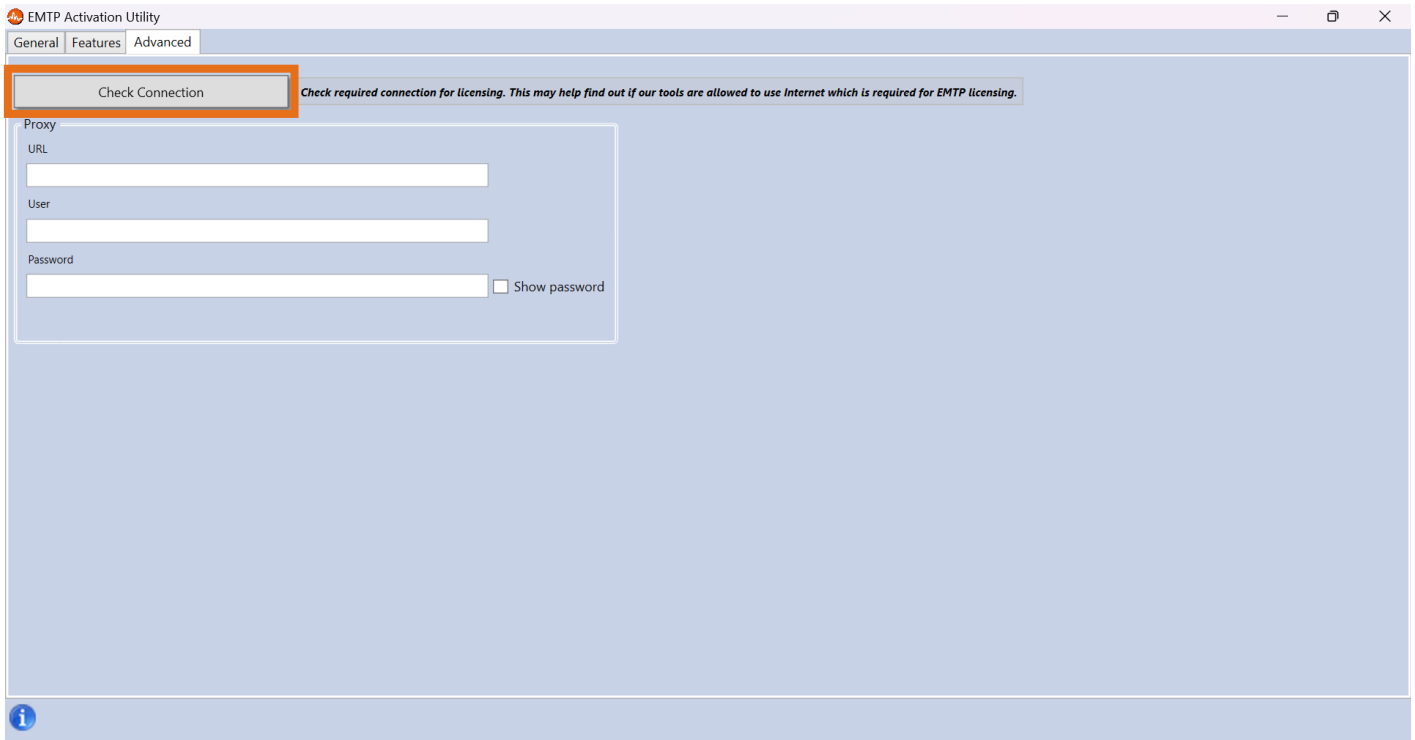
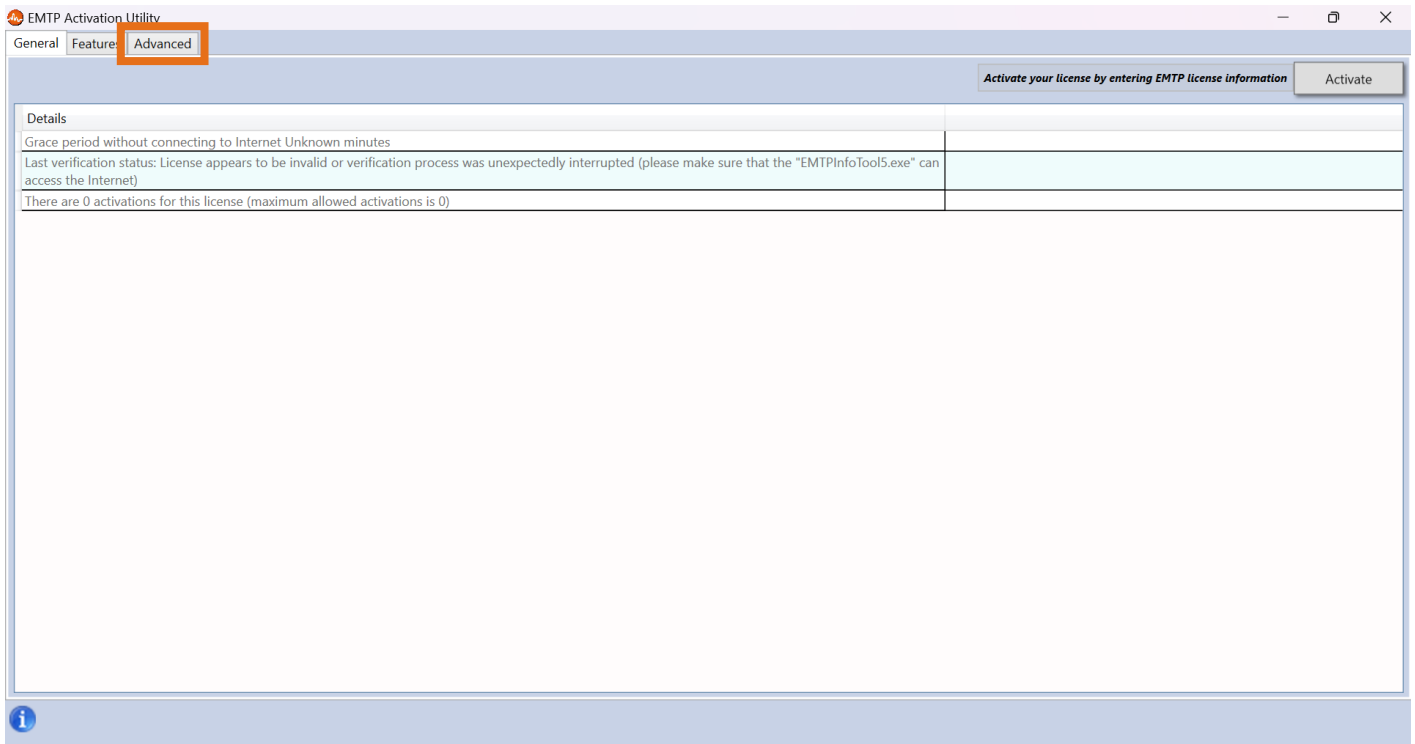


The Activation Utility is also accessible from the Help & Support section on the left side of the File page of EMTPWorks or at the following location:

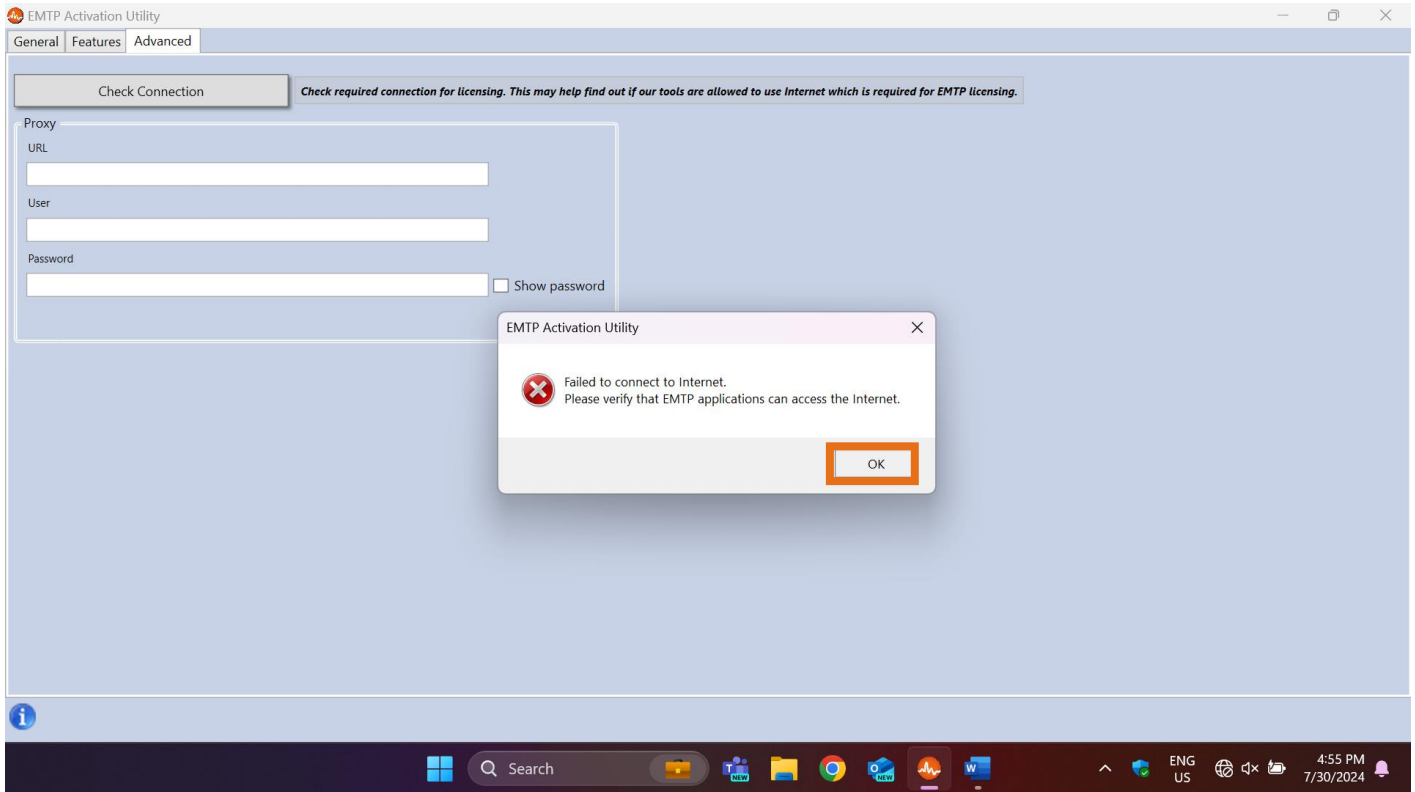
C:\Program Files (x86)\EMTPWorks X.X.X\EMTP Activation Utility\EMTP_ActivationUtility.exe



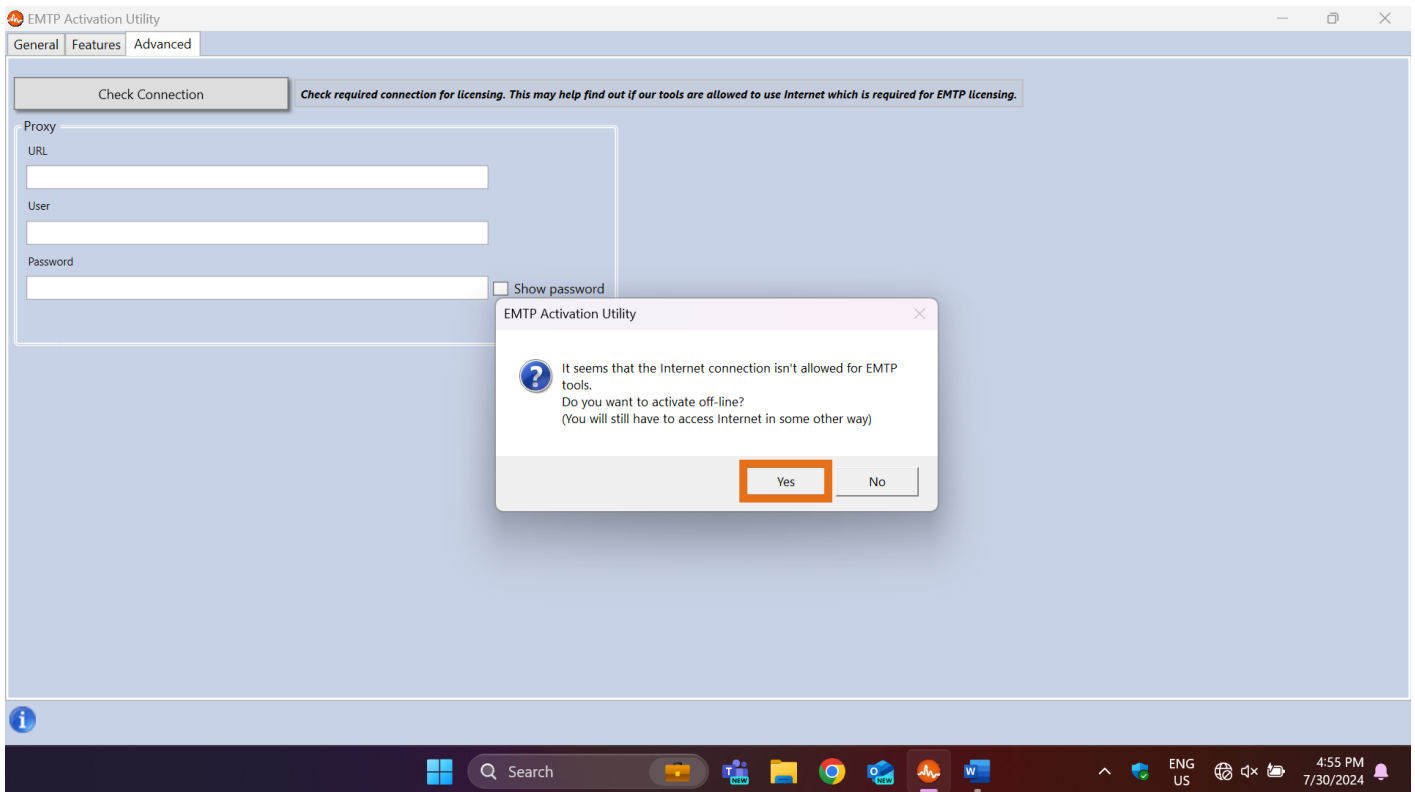
2. Click on the “**Advanced**” tab from the EMTP Activation Utility window and then into the “**Check Connection**” option.



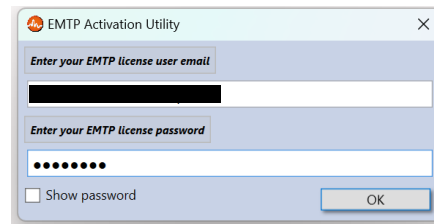
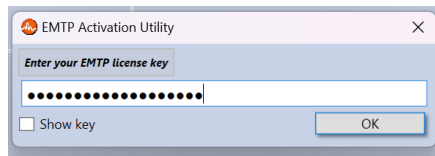
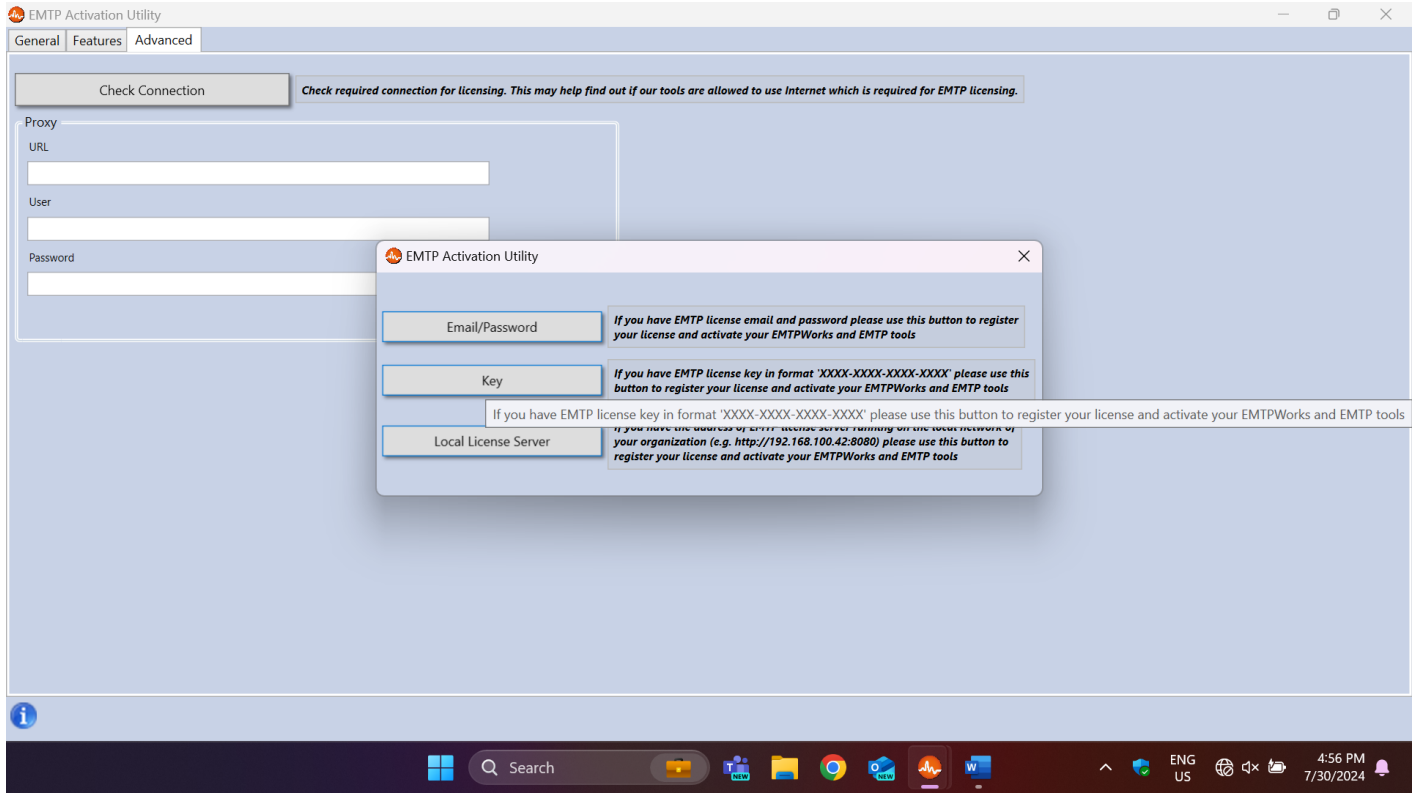
3. A message indicating that an internet connection is not possible appears. Click “**OK**”. You may manually disconnect from internet to force the message.



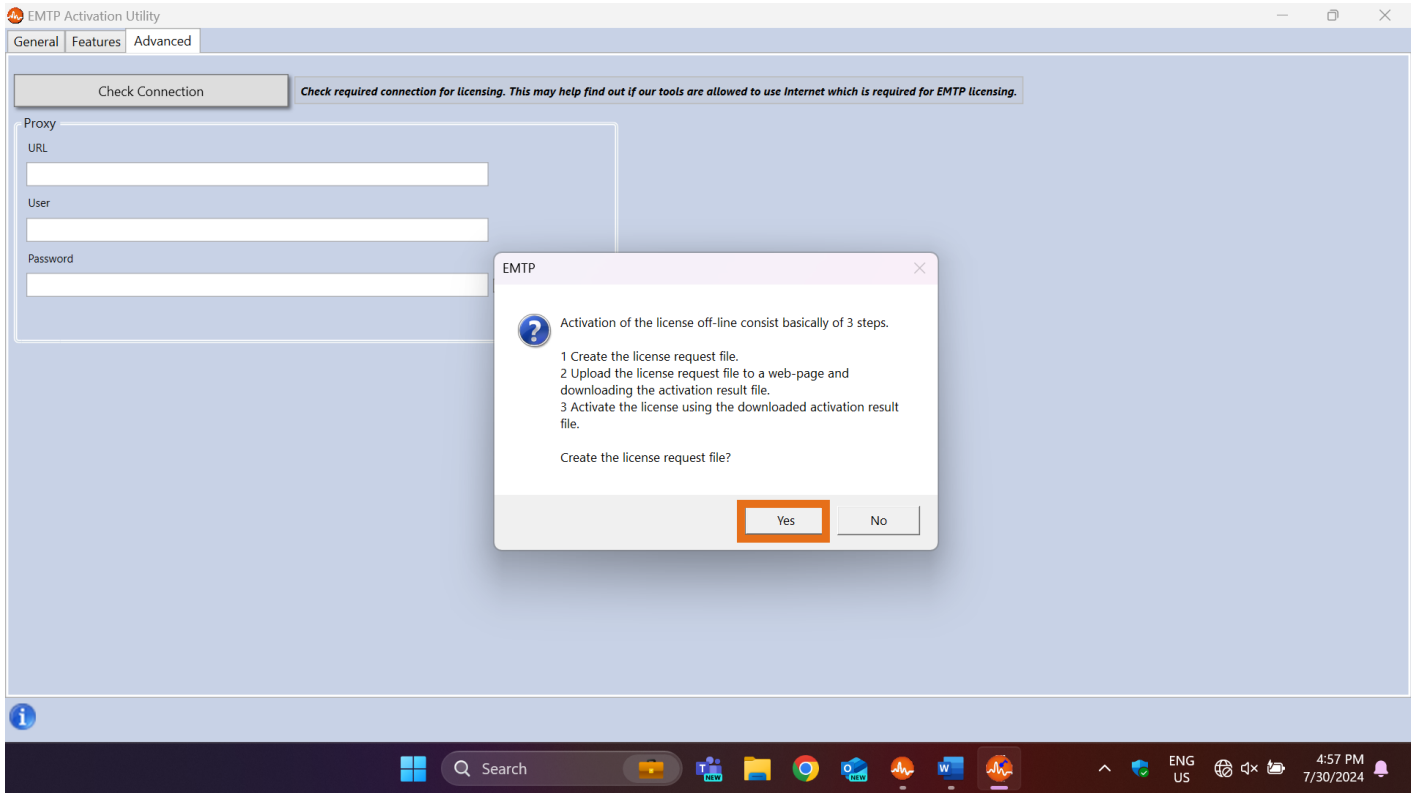
4. A message enabling offline activation will appear; click "Yes" to proceed with this process.



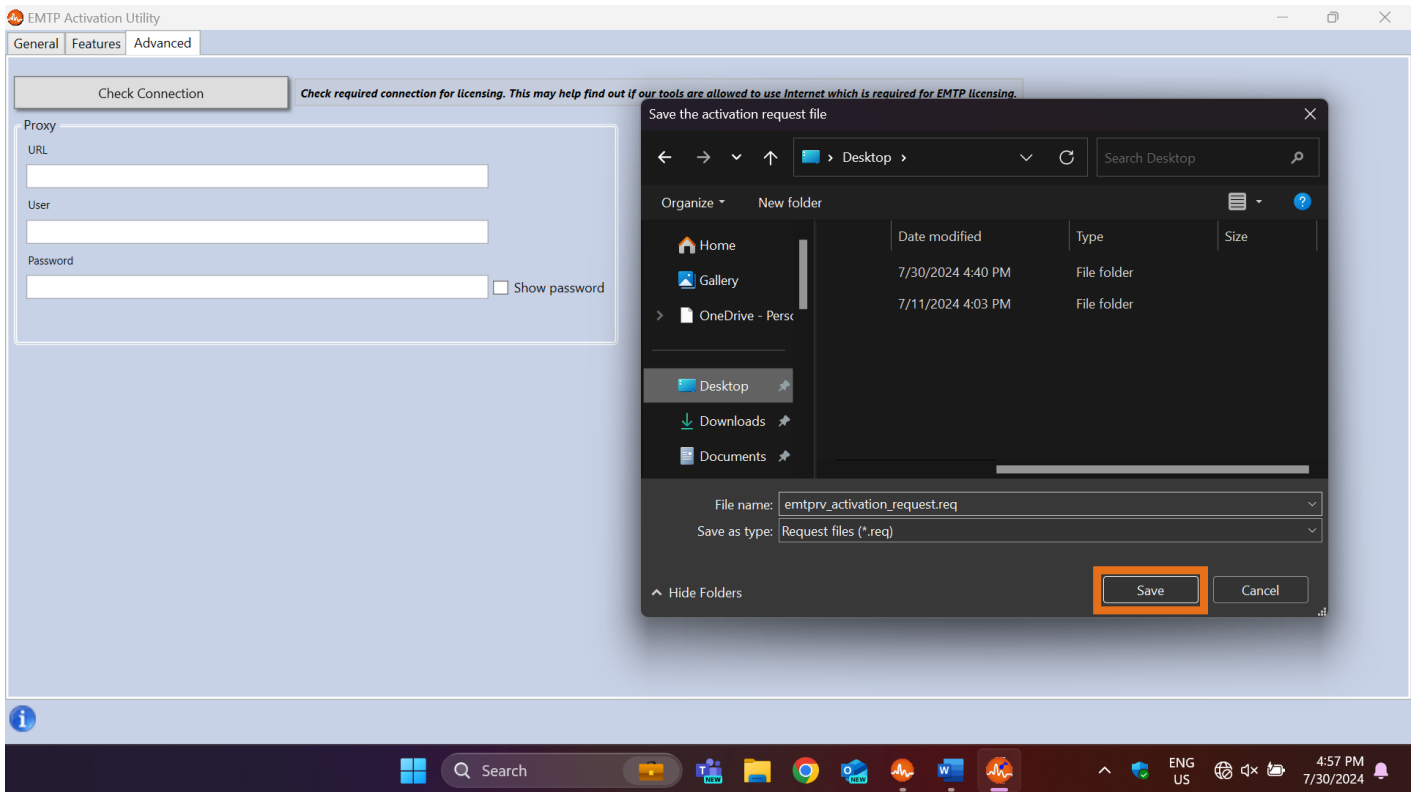
5. Select the **License** option and enter the **Credentials** obtained from LicenseSpring.

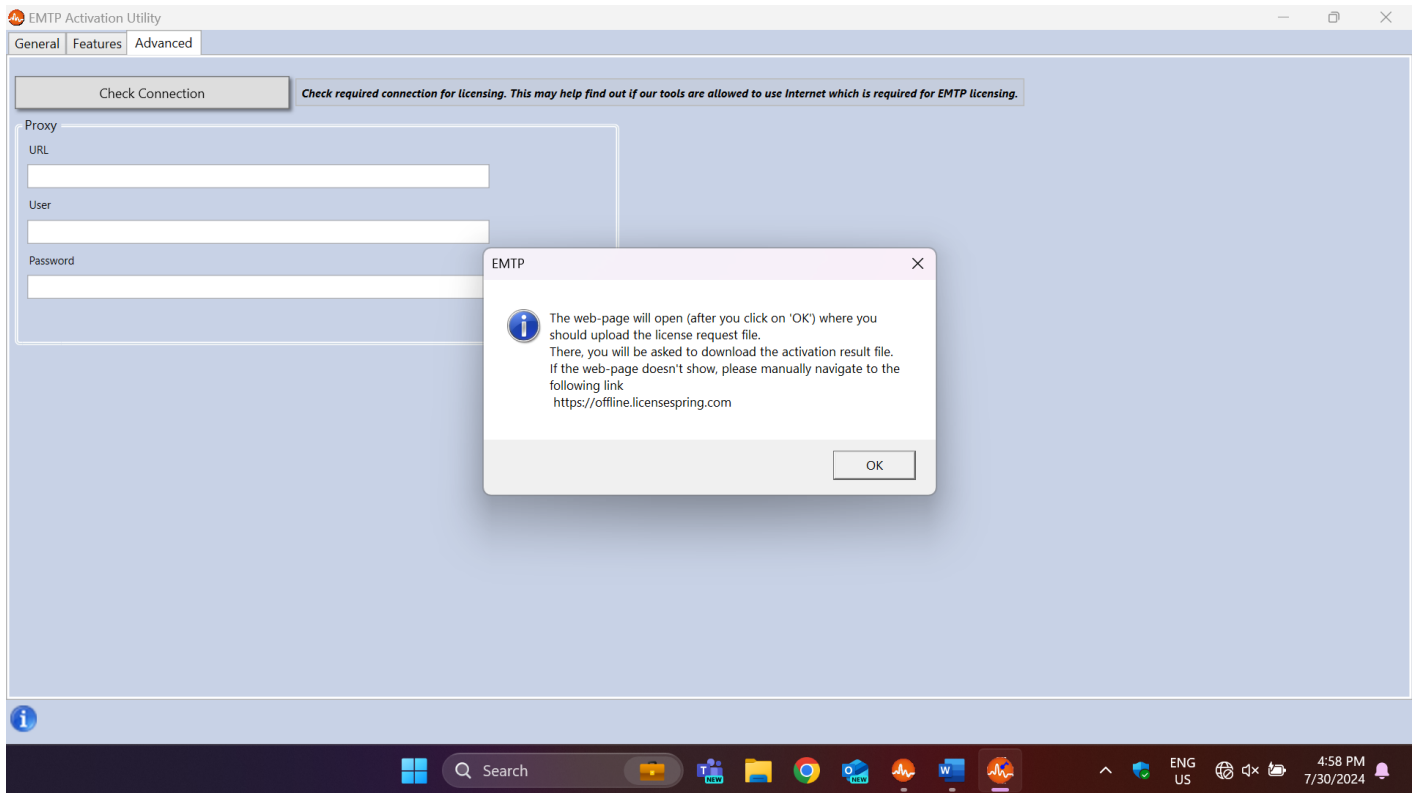


6. Click OK and Yes to the following message to create the license request file for offline activation.



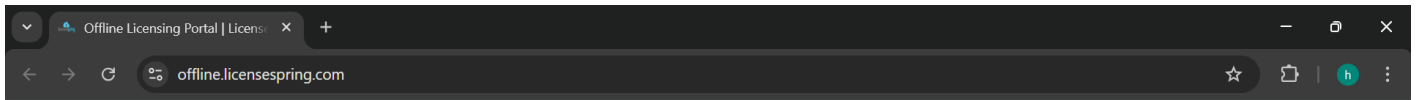
7. Save the file **emtpv_activation_request.req** on your Desktop.





Internet will be required for the following steps 8 and 9. The .req file may be transferred to another computer with an internet connection using a USB-key or any other means. Leave the activation utility and the message window open for the following steps.

8. On a computer with internet access, go to the [offline activation webpage \(https://offline.licensespring.com\)](https://offline.licensespring.com).
9. Upload the file **emtpv_activation_request.req** generated by the **Activation Utility** and download the file **ls_activation.lic** automatically generated by the **browser**. Transfer this file to the computer where you are doing the activation process, using a USB key or any other means.



v1.0.1

Offline Licensing

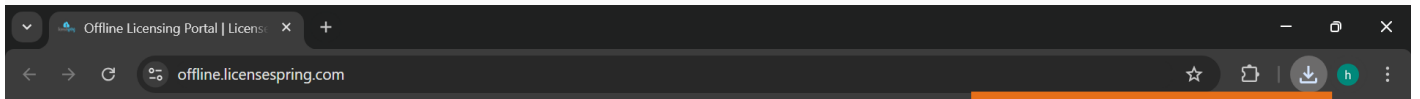
Offline licensing allows you to add licensing to applications that run on computers without an internet connection. Upload an encrypted file from your application and you will receive licensing file which you need to transfer to computer.

Upload file



Drag and drop a file here, or click to select

Valid types: .req



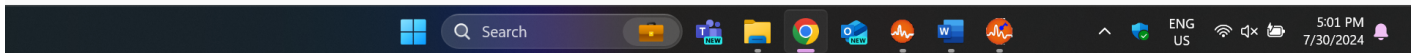
v1.0.1

Offline Licensing

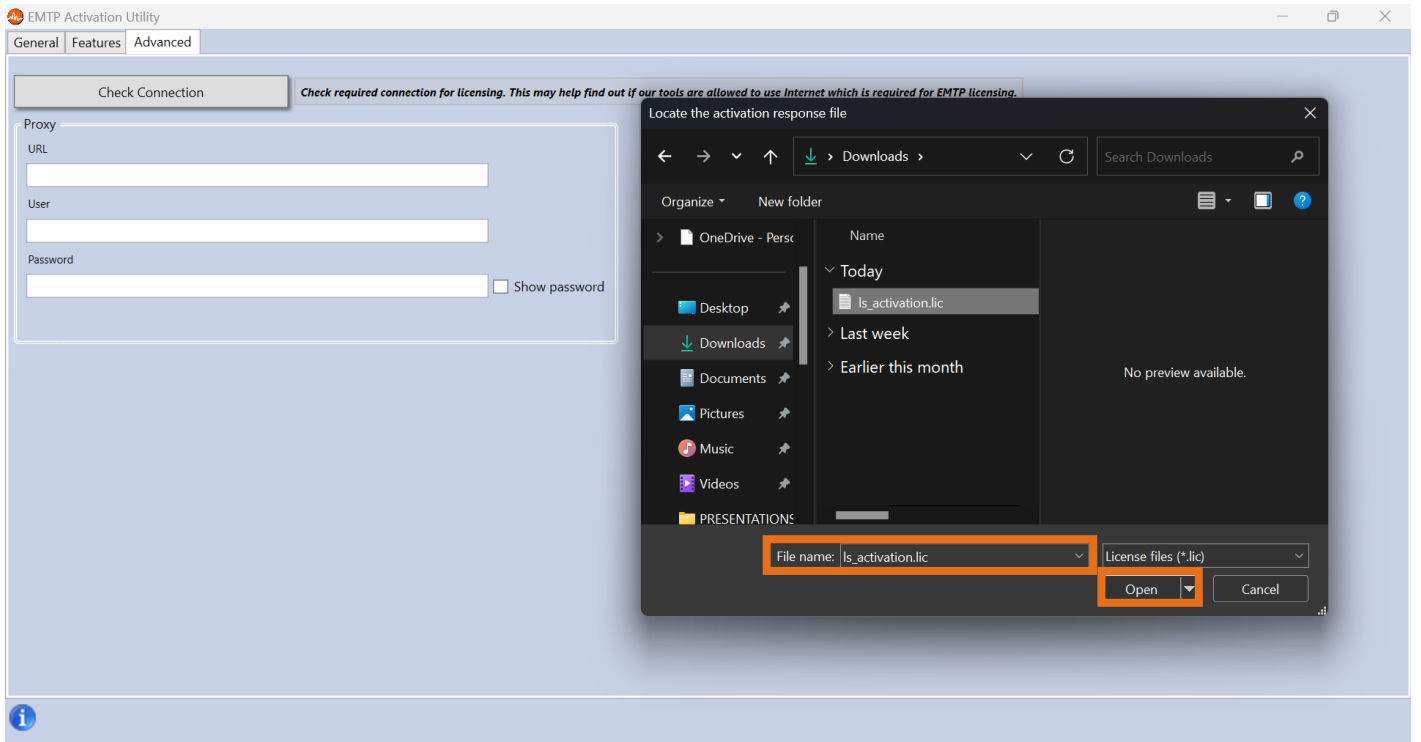
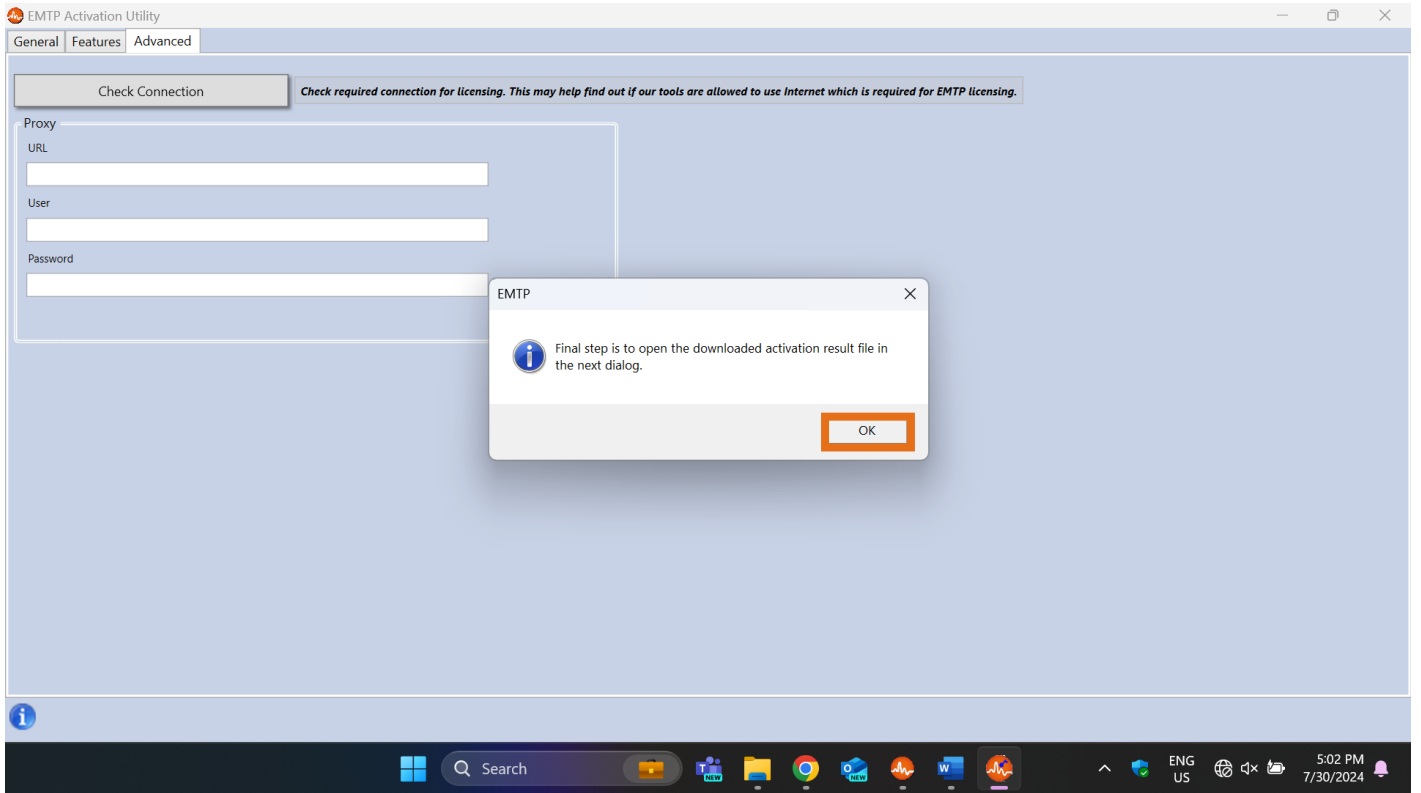
Offline licensing allows you to add licensing to applications that run on computers without an internet connection. Upload an encrypted file from your application and you will receive licensing file which you need to transfer to computer.

Uploading

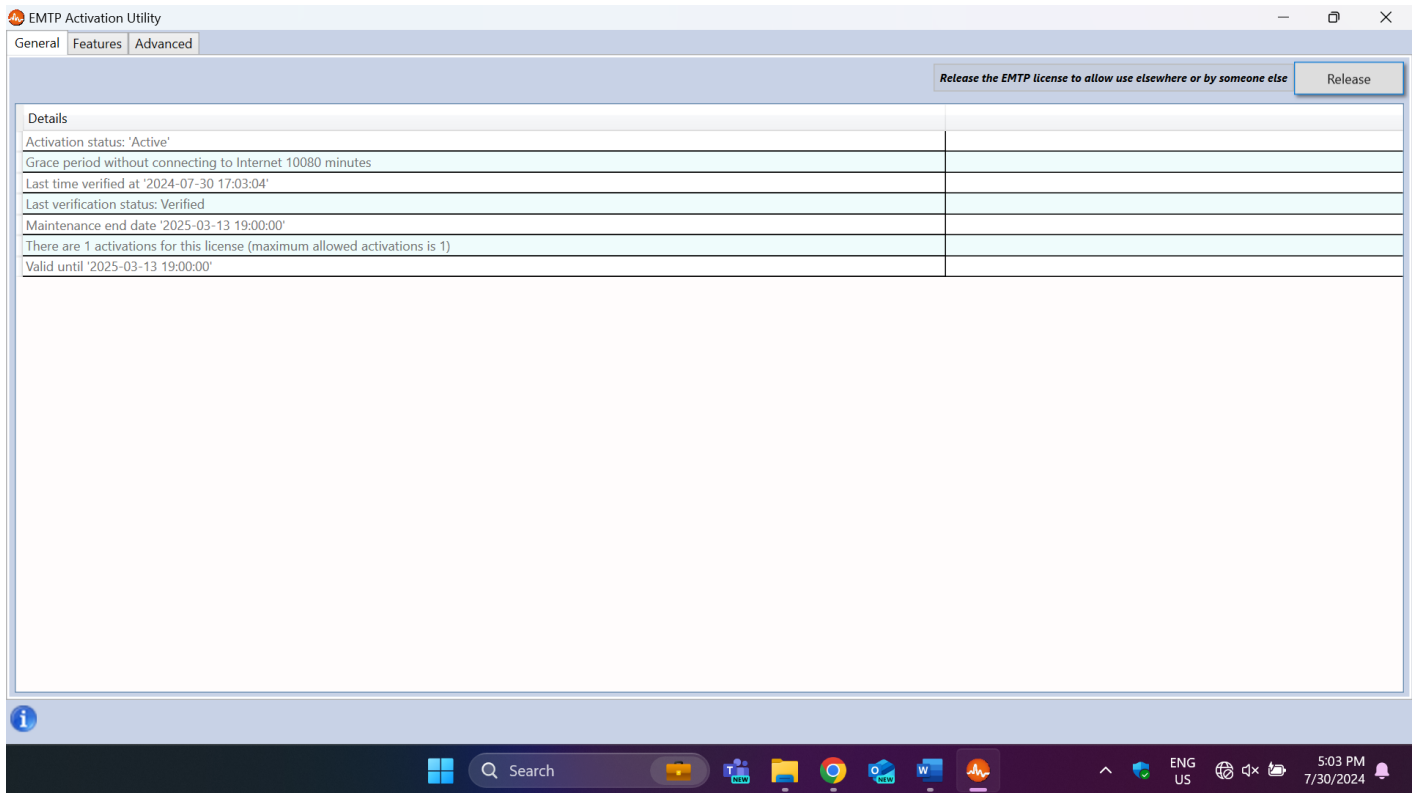
emtpv_activation_request.req - 768 bytes 100 %



10. Return to the computer where the activation is being performed and complete the final step by uploading the file **ls_activation.lic** generated by LicenseSpring webpage.

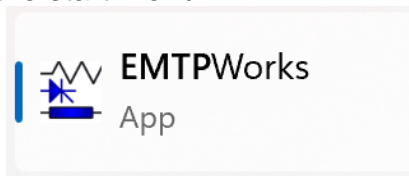


11. All the license details will be displayed and EMTP will be ready to use.



12. EMTP may be started:

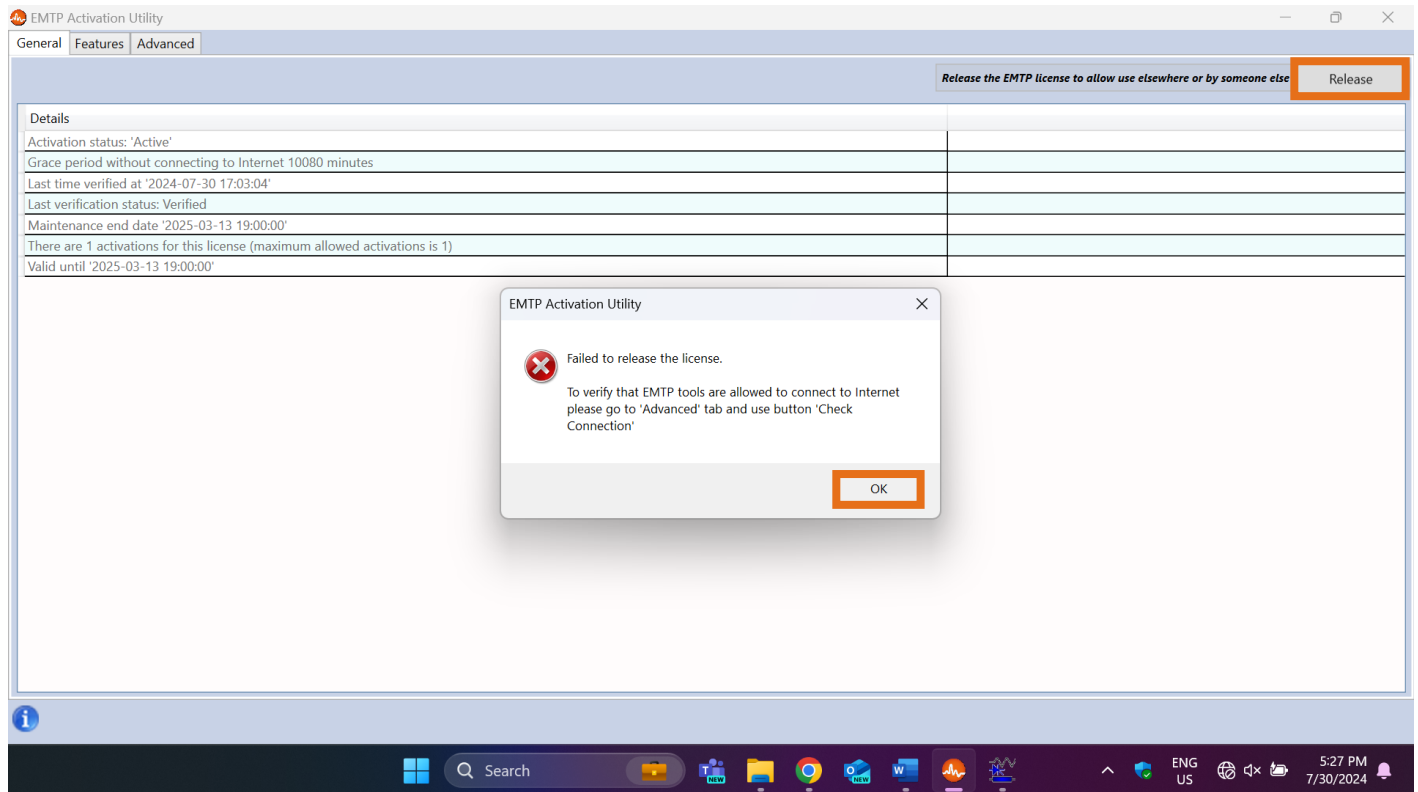
- From the start menu



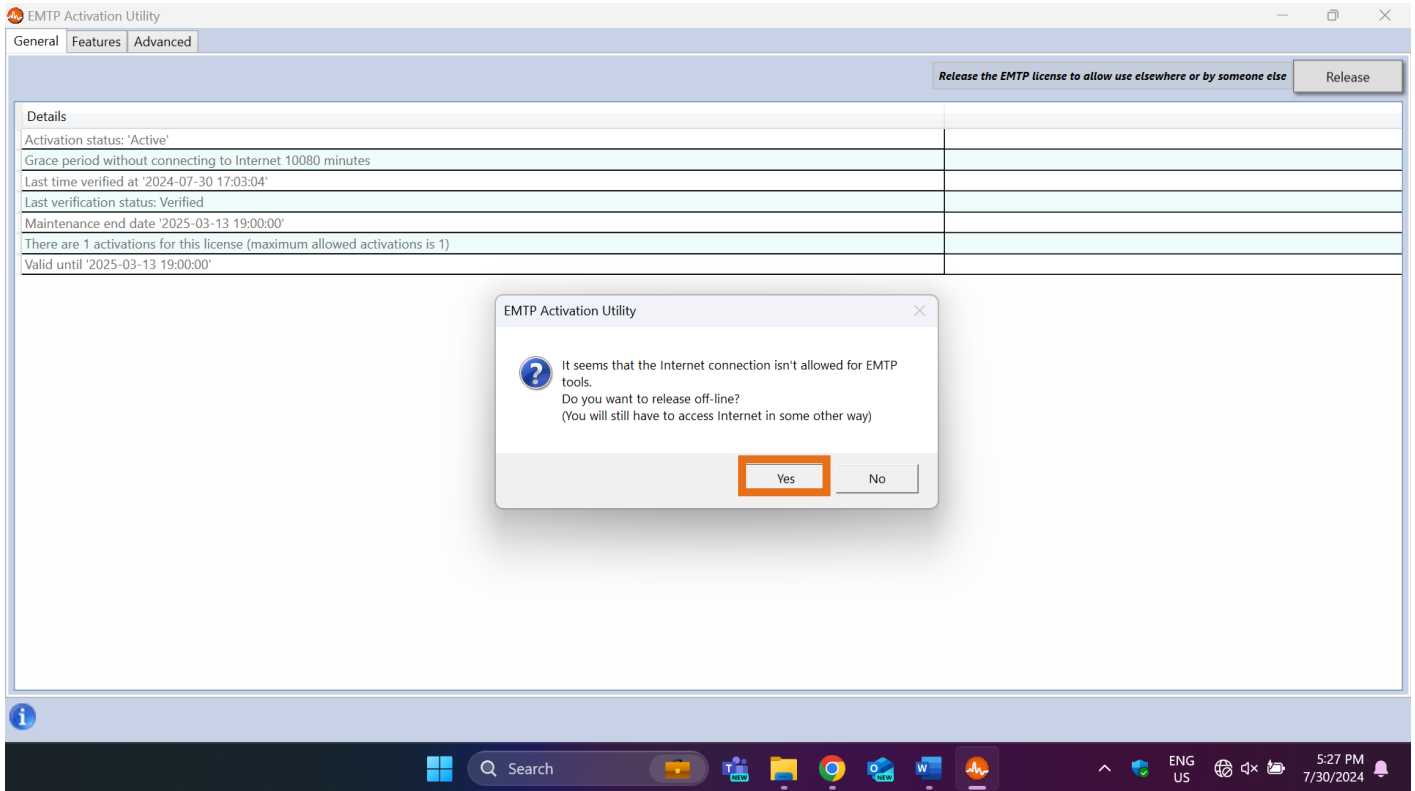
- From **C:\Program Files (x86)\EMTPWorks X.X.X\EMTPWorksXXX.exe**
Where X.X.X (XXX) is the version number, for example 4.5.0 (450).

Release Offline License

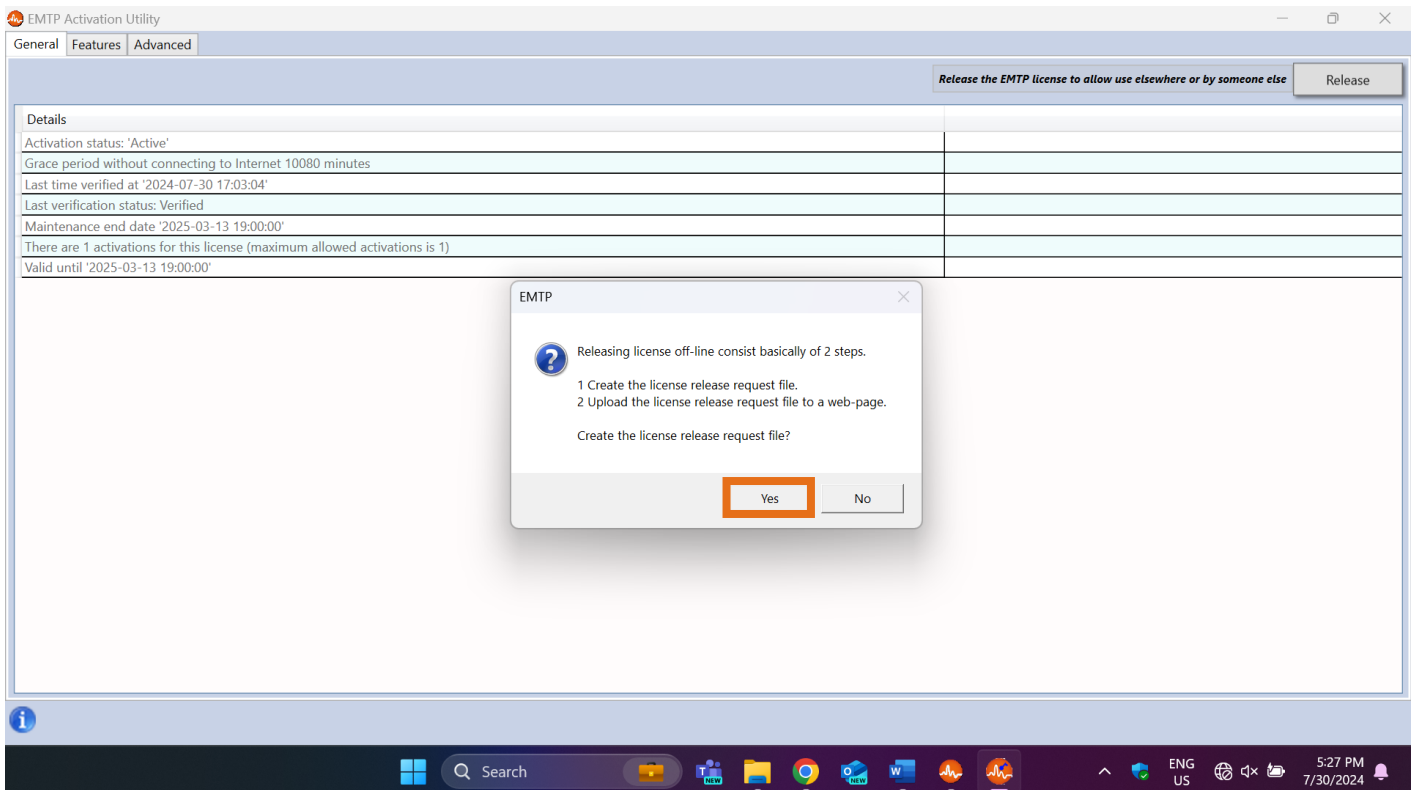
1. To deactivate the offline license, go to the **Activation Utility** and click "**Release**". If an internet connection is available, the license is now released and may be used on another computer. If no internet connection is available, click "**OK**" on the message indicating no internet connection was found.

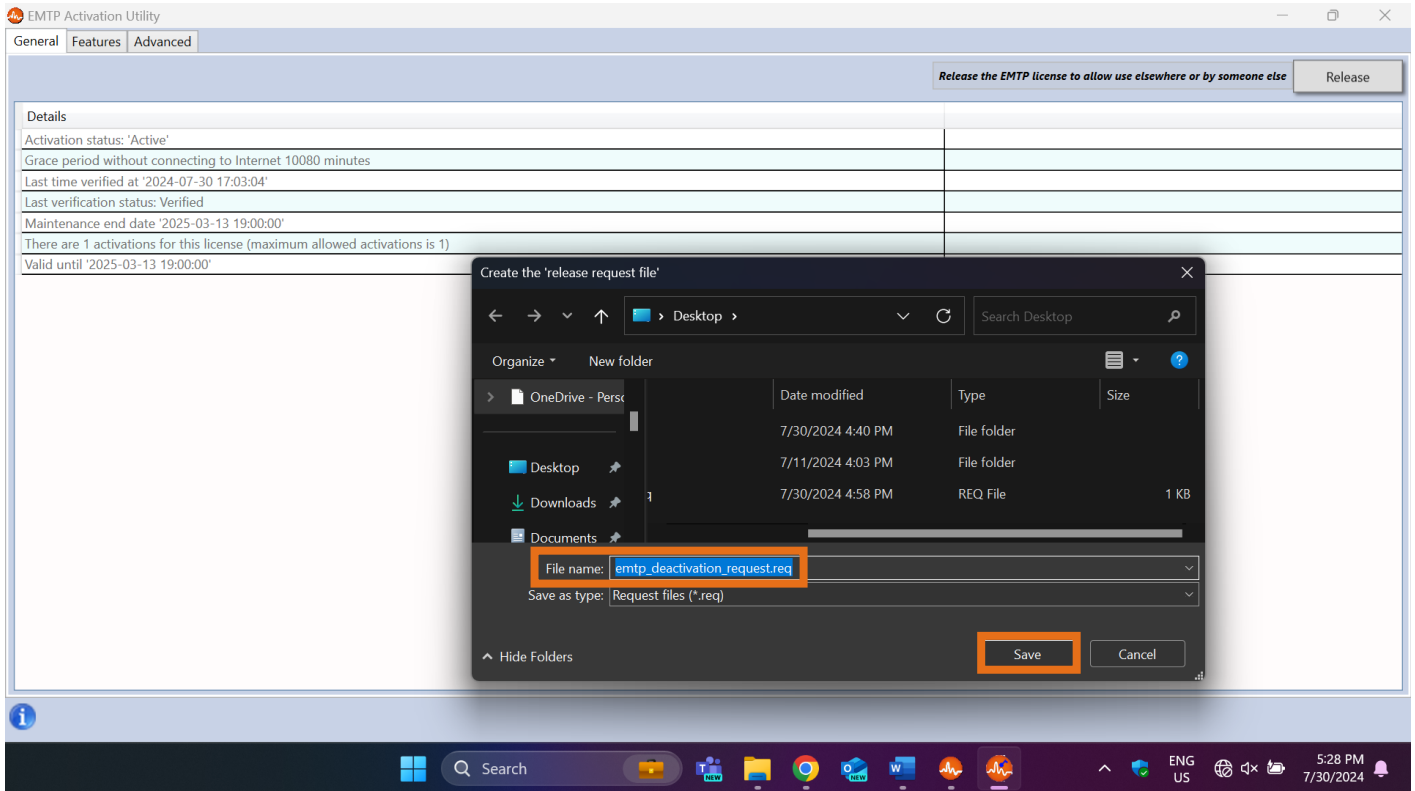


13. Select "**Yes**" to start the offline deactivation process

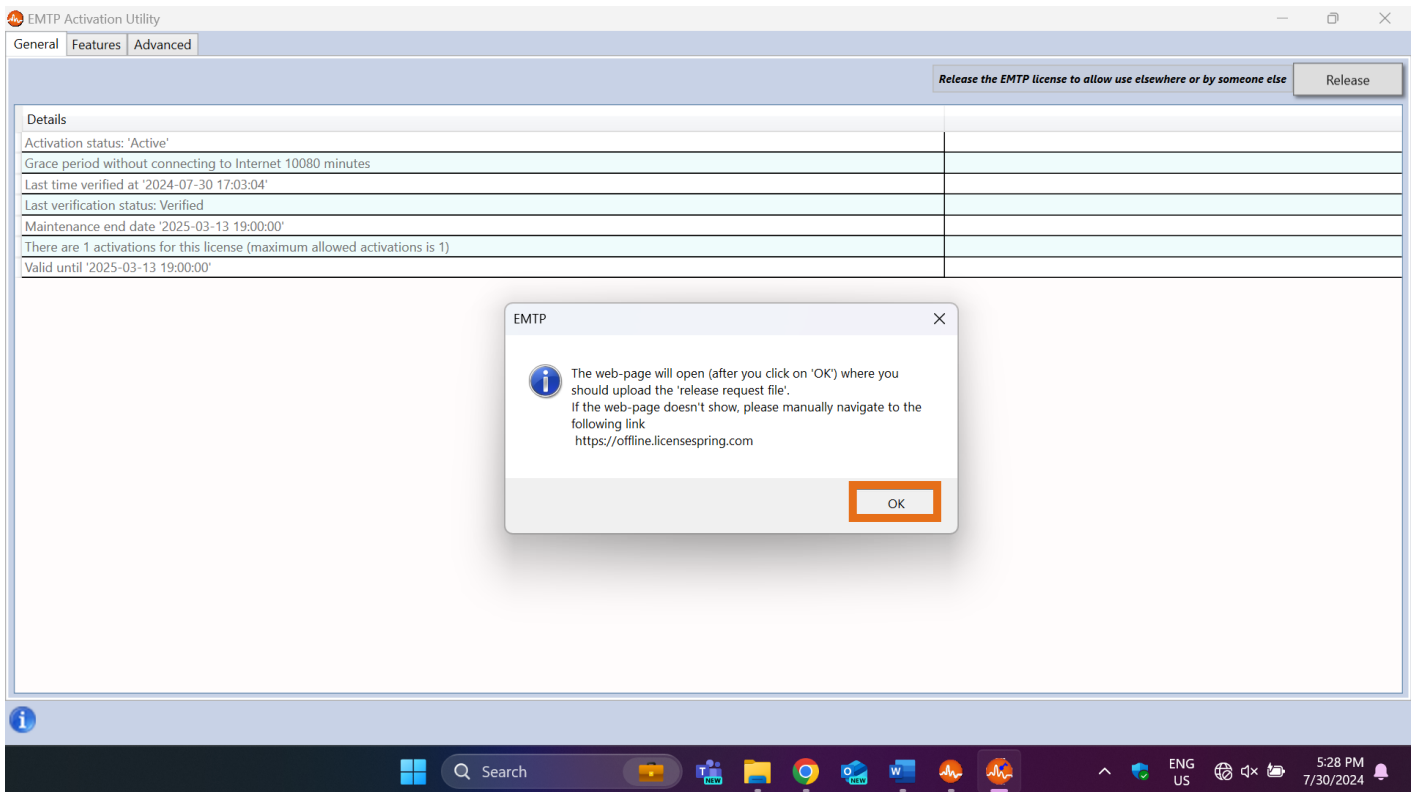


14. Create the license release request file **emtp_deactivation_request.req** and transfer it to a computer with an internet connection, using a USB or any other means.

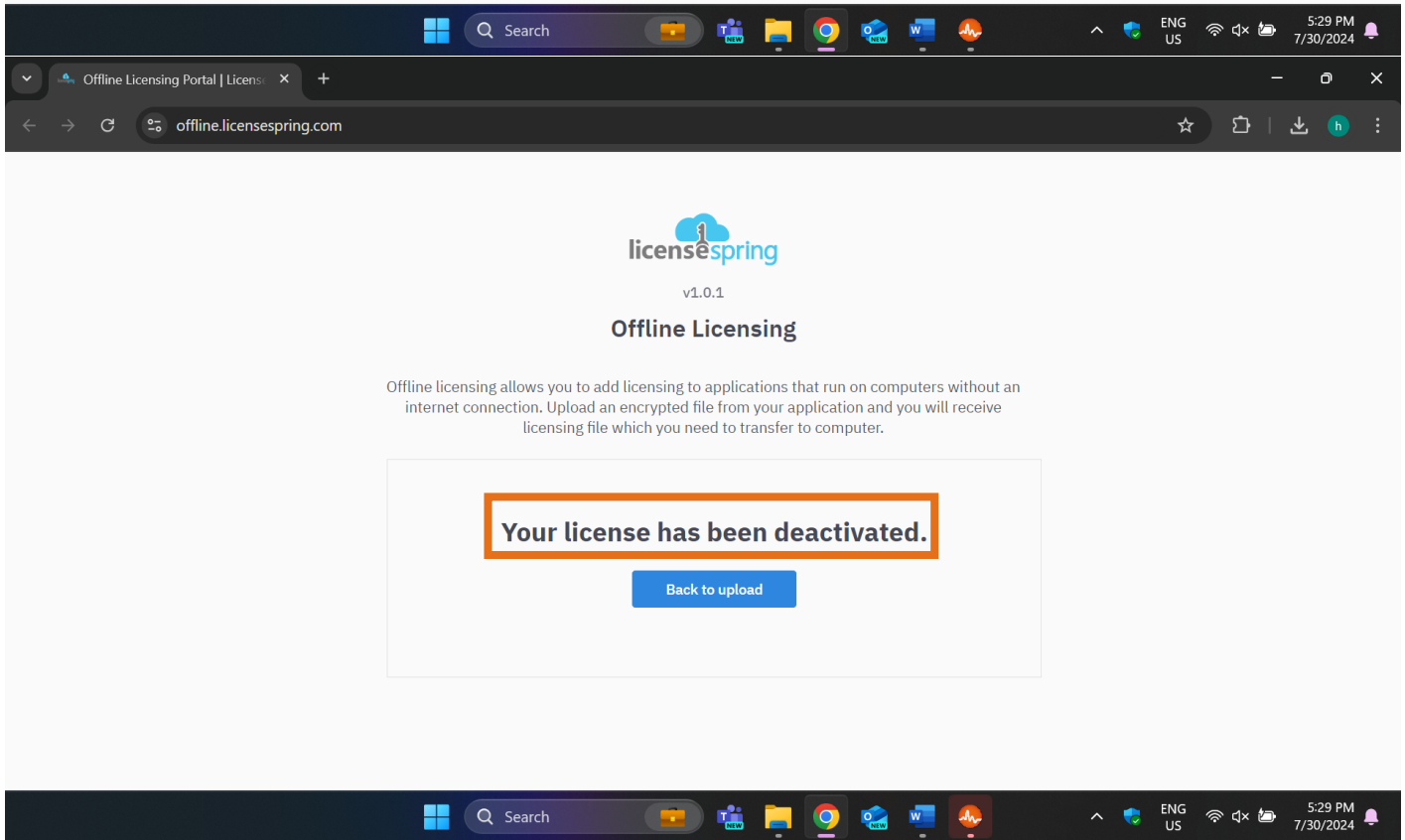
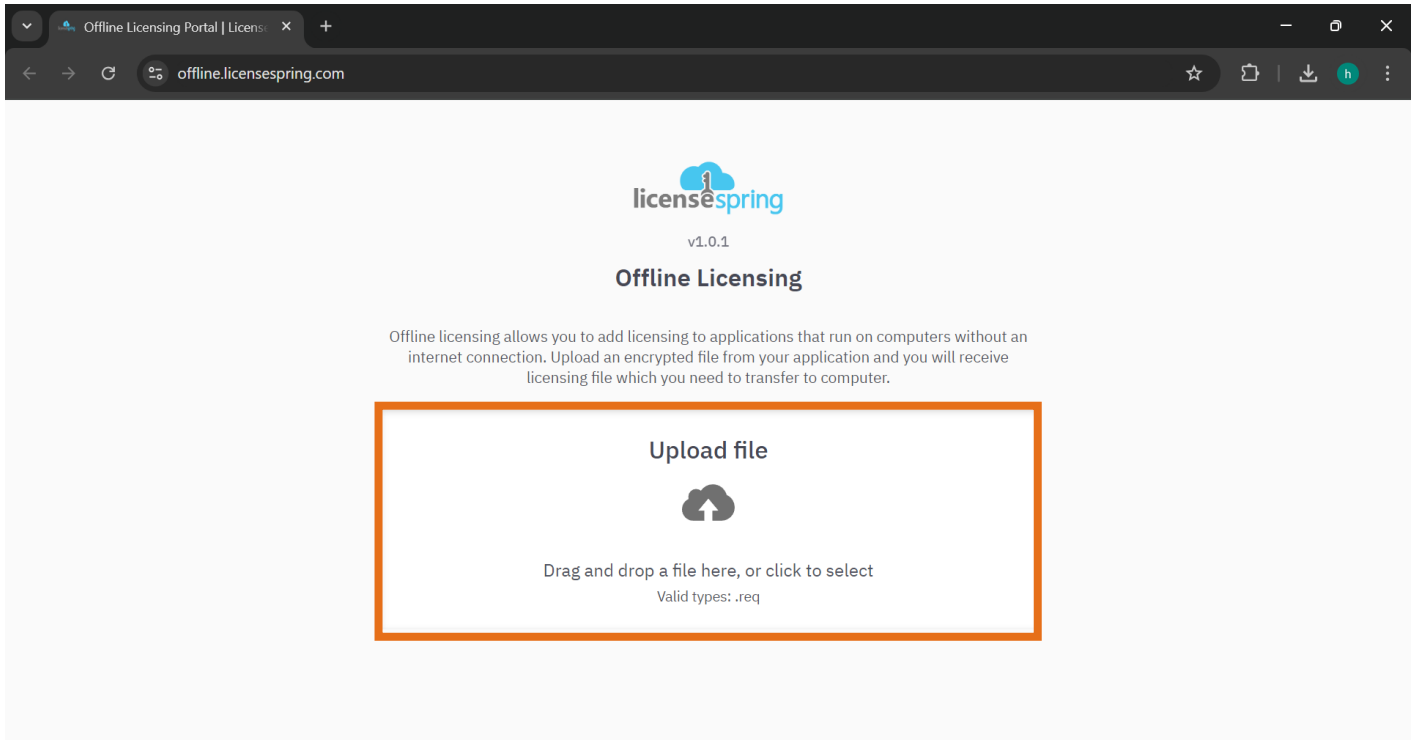




15. On a computer with an internet access, go to the [offline deactivation page](https://offline.licensespring.com) (<https://offline.licensespring.com>).



16. Upload the file **emtp_deactivation_request.req** generated by the **Activation Utility** and wait for the message indicating that the deactivation has been successful to appear.



Do not hesitate to get in touch with our technical support if you require some assistance:

EMTP[®] Technical support
support@emtp.com