

# Reference device name

Jean Mahseredjian, Friday, December 02, 2011

Some devices need to reference to other devices for data. In the case of the “Ideal switch” device, its Random data tab allows creating a reference to another device of the same type.

The following options are available when a “Reference device name is used”:

- ❑ It is allowed to refer to a device in the current (local) subnetwork or circuit. When referencing to a device in the local subnetwork it is needed to provide a valid device name. This is called local reference. In the example of Figure 1 the device named “SW3” is using a local reference to the device “SW2”. It is assumed that “SW2” is a valid device available in the current circuit level.
- ❑ It is allowed to refer to a device located in an other subnetwork. This is called full path reference. In this case in addition to the referred device name it is needed to provide the full subnetwork path to that device. The subnetwork level separator character is “/”. In the example of Figure 2 the device “SW3” is referring to the device “SW3” located in the subnetwork “SW2Sub”. It is allowed to provide multilevel paths by simply separating each path (subnetwork) name by a “/”.
- ❑ The reference from a subnetwork to a device located at the top level of the design is a particular case of the full path reference method. The top level is indicated by concatenating a “/” to the referenced device name. An example is given in Figure 3. The device “SW2” located in a subnetwork (at any level) is referring to the device “SW1” located at the top level of the design.

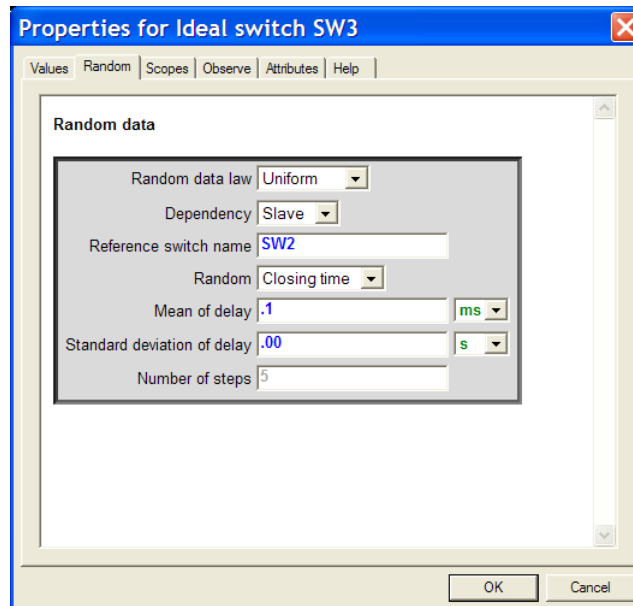


Figure 1 Local reference example

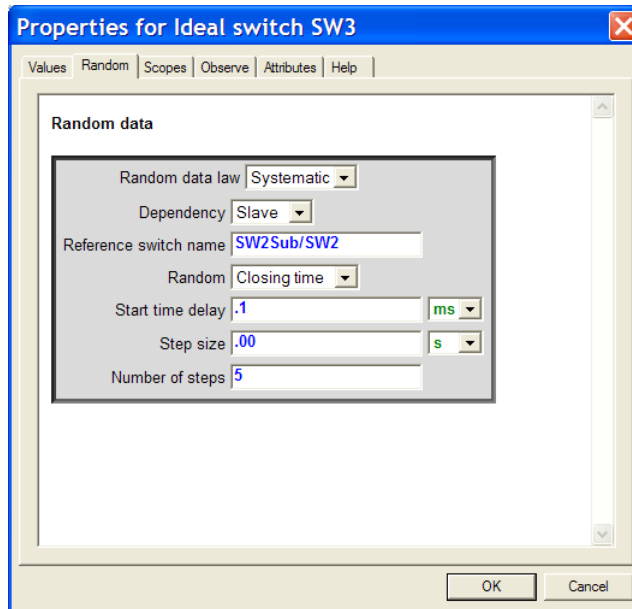


Figure 2 Full path reference example

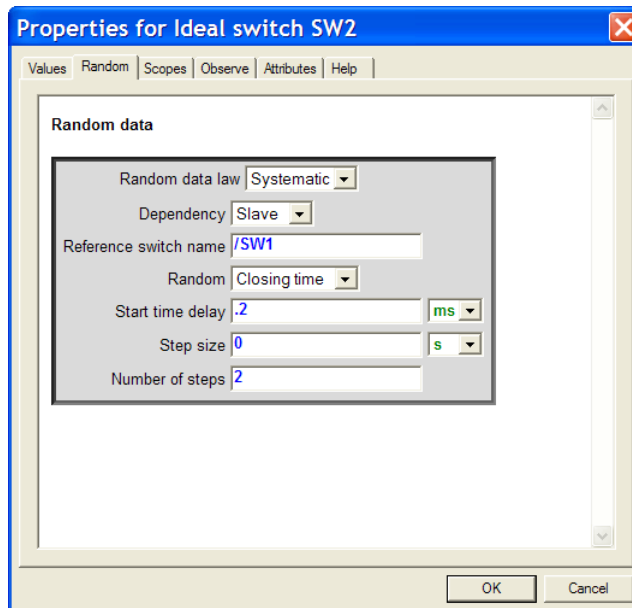


Figure 3 Top-level reference example